

Product datasheet for **AP50057PU-N**

ACPL2 (PXYLP1) (Center) Rabbit Polyclonal Antibody

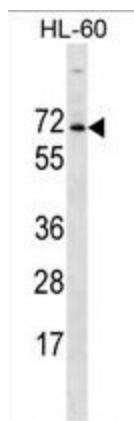
Product data:

| | |
|-----------------------|---|
| Product Type: | Primary Antibodies |
| Applications: | WB |
| Recommended Dilution: | ELISA: 1/1000. Western blotting: 1/100 - 1/500. |
| Reactivity: | Human |
| Host: | Rabbit |
| Isotype: | Ig |
| Clonality: | Polyclonal |
| Immunogen: | KLH conjugated synthetic peptide between 306-335 amino acids from the Central region of human ACPL2 |
| Specificity: | This antibody reacts to ACPL2. |
| Formulation: | PBS containing 0.09% (W/V) sodium azide as preservative State: Aff - Purified State: Liquid purified Ig fraction |
| Concentration: | lot specific |
| Purification: | Affinity chromatography on Protein A |
| Conjugation: | Unconjugated |
| Storage: | Store the antibody undiluted at 2-8°C for one month or (in aliquots) at -20°C for longer. Avoid repeated freezing and thawing. |
| Stability: | Shelf life: one year from despatch. |
| Gene Name: | 2-phosphoxylose phosphatase 1 |
| Database Link: | Entrez Gene 92370 Human Q8TE99 |
| Synonyms: | Acid phosphatase-like protein 2, 2-phosphoxylose phosphatase 1, Xylosyl phosphatase, epididymis luminal protein 124, HEL124 |
| Note: | Molecular Weight: 55240 Da |
| Protein Families: | Transmembrane |



[View online »](#)

Product images:



ACPL2 Antibody (Center) western blot analysis in HL-60 cell line lysates (35 ug/lane). This demonstrates the ACPL2 antibody detected the ACPL2 protein (arrow).