

Product datasheet for **AP50056PU-N**

Acid Phosphatase (ACP1) (N-term) Rabbit Polyclonal Antibody

Product data:

Product Type:	Primary Antibodies
Applications:	FC, IHC, WB
Recommended Dilution:	Peptide ELISA: 1/1000. Western blotting: 1/1000. Immunohistochemistry: 1/50 - 1/100. Flow cytometry: 1/10 - 1/50.
Reactivity:	Human
Host:	Rabbit
Isotype:	Ig
Clonality:	Polyclonal
Immunogen:	KLH conjugated synthetic peptide between 33~61 amino acids from the N-terminal region of human ACP1
Specificity:	This antibody reacts to ACP1 / LMW-PTPase.
Formulation:	PBS containing 0.09% (W/V) sodium azide as preservative State: Aff - Purified State: Liquid purified Ig fraction
Concentration:	lot specific
Purification:	Affinity chromatography on Protein A
Conjugation:	Unconjugated
Storage:	Store the antibody undiluted at 2-8°C for one month or (in aliquots) at -20°C for longer. Avoid repeated freezing and thawing.
Stability:	Shelf life: one year from despatch.
Gene Name:	acid phosphatase 1, soluble
Database Link:	Entrez Gene 52 Human P24666



[View online »](#)

Background:

ACP1 belongs to the phosphotyrosine protein phosphatase family of proteins. It functions as an acid phosphatase and a protein tyrosine phosphatase by hydrolyzing protein tyrosine phosphate to protein tyrosine and orthophosphate. This enzyme also hydrolyzes orthophosphoric monoesters to alcohol and orthophosphate. This gene is genetically polymorphic, and three common alleles segregating at the corresponding locus give rise to six phenotypes. Each allele appears to encode at least two electrophoretically different isozymes, Bf and Bs, which are produced in allele-specific ratios.

Synonyms:

Adipocyte acid phosphatase, Red cell acid phosphatase 1, HAAP

Note:

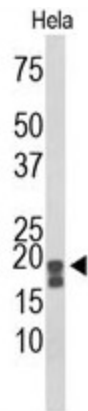
Molecular Weight: 18042 Da

Protein Families:

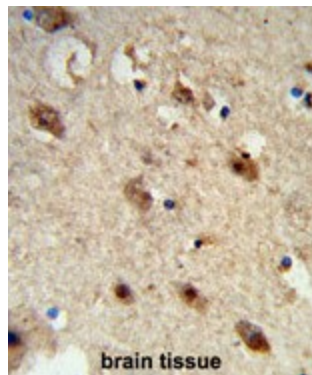
Druggable Genome, Phosphatase, Transmembrane

Protein Pathways:

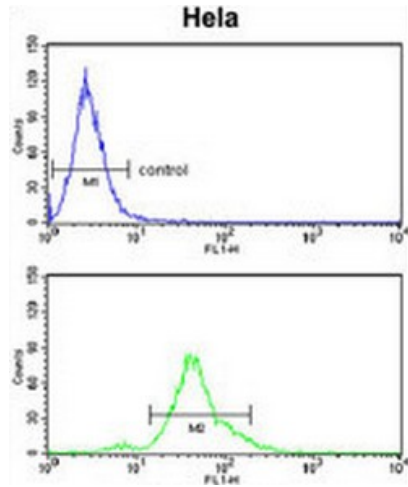
Adherens junction, Riboflavin metabolism

Product images:


Western blot analysis of ACP1 Antibody (N-term) in HeLa cell line lysates (35 ug/lane). ACP1 (arrow) was detected using the purified Pab.



Formalin-fixed and paraffin-embedded human brain tissue reacted with ACP1 Antibody (N-term), which was peroxidase-conjugated to the secondary antibody, followed by DAB staining. This data demonstrates the use of this antibody for immunohistochemistry; clinical relevance has not been evaluated.



ACP1 Antibody (N-term) flow cytometry analysis of HeLa cells (bottom histogram) compared to a negative control cell (top histogram). FITC-conjugated goat-anti-rabbit secondary antibodies were used for the analysis.