

Product datasheet for **AP50046PU-N**

ACAD10 (Center) Rabbit Polyclonal Antibody

Product data:

Product Type:	Primary Antibodies
Applications:	FC, IHC, WB
Recommended Dilution:	ELISA: 1/1000. Western blotting: 1/100 - 1/500. Immunohistochemistry: 1/50 - 1/100. Flow Cytometry: 1/10 - 1/50.
Reactivity:	Human
Host:	Rabbit
Isotype:	Ig
Clonality:	Polyclonal
Immunogen:	KLH conjugated synthetic peptide between 396-425 amino acids from the Central region of human ACD10
Specificity:	This antibody reacts to ACAD10.
Formulation:	PBS containing 0.09% (W/V) sodium azide as preservative State: Aff - Purified State: Liquid purified Ig fraction
Concentration:	lot specific
Purification:	Affinity chromatography on Protein A
Conjugation:	Unconjugated
Storage:	Store the antibody undiluted at 2-8°C for one month or (in aliquots) at -20°C for longer. Avoid repeated freezing and thawing.
Stability:	Shelf life: one year from despatch.
Gene Name:	acyl-CoA dehydrogenase family member 10
Database Link:	Entrez Gene 80724 Human Q6JQN1



[View online »](#)

Background:

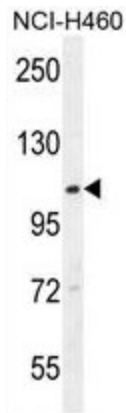
This gene encodes a member of the acyl-CoA dehydrogenase family of enzymes (ACADs), which participate in the beta-oxidation of fatty acids in mitochondria. The encoded enzyme contains a hydrolase domain at the N-terminal portion, a serine/threonine protein kinase catalytic domain in the central region, and a conserved ACAD domain at the C-terminus. Several alternatively spliced transcript variants of this gene have been described, but the full-length nature of some of these variants has not been determined.

Synonyms:

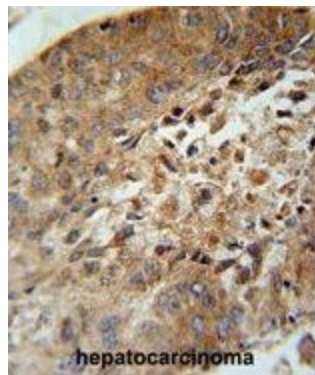
ACAD-10

Note:**Molecular Weight:** 118834 Da**Protein Families:**

Druggable Genome

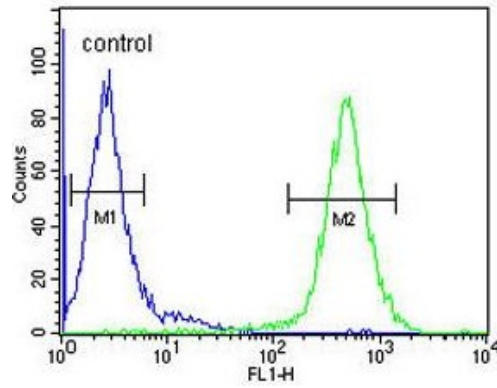
Product images:

ACD10 Antibody (Center) western blot analysis in NCI-H460 cell line lysates (35ug/lane). This demonstrates the ACD10 antibody detected the ACD10 protein (arrow).



ACD10 Antibody (Center) immunohistochemistry analysis in formalin fixed and paraffin embedded human hepatocarcinoma followed by peroxidase conjugation of the secondary antibody and DAB staining. This data demonstrates the use of the ACD10 Antibody (Center) for immunohistochemistry. Clinical relevance has not been evaluated.

NCI-H460



ACD10 Antibody (Center) flow cytometric analysis of NCI-H460 cells (right histogram) compared to a negative control cell (left histogram). FITC-conjugated goat-anti-rabbit secondary antibodies were used for the analysis.