

Product datasheet for **AP50042PU-N**

ACSBG2 (Center) Rabbit Polyclonal Antibody

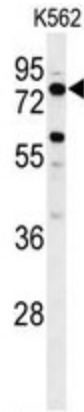
Product data:

Product Type:	Primary Antibodies
Applications:	FC, IHC, WB
Recommended Dilution:	ELISA: 1/1000. Western blotting: 1/100 - 1/500. Immunohistochemistry: 1/50 - 1/100. Flow cytometric: 1/10 - 1/50.
Reactivity:	Human
Host:	Rabbit
Isotype:	Ig
Clonality:	Polyclonal
Immunogen:	KLH conjugated synthetic peptide between 244~273 amino acids from the Central region of human ACSBG2
Specificity:	This antibody reacts to ACSBG2.
Formulation:	PBS containing 0.09% (W/V) sodium azide as preservative State: Aff - Purified State: Liquid purified Ig fraction
Concentration:	lot specific
Purification:	Affinity chromatography on Protein A
Conjugation:	Unconjugated
Storage:	Store the antibody undiluted at 2-8°C for one month or (in aliquots) at -20°C for longer. Avoid repeated freezing and thawing.
Stability:	Shelf life: one year from despatch.
Gene Name:	acyl-CoA synthetase bubblegum family member 2
Database Link:	Entrez Gene 81616 Human Q5FVE4
Synonyms:	BGR, PRTD-NY3
Note:	Molecular Weight: 74326 Da

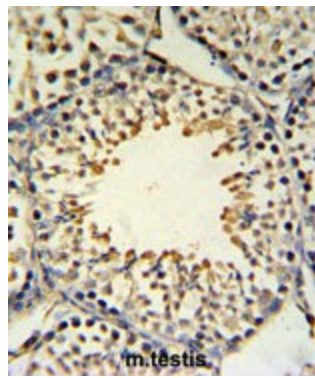


[View online »](#)

Product images:

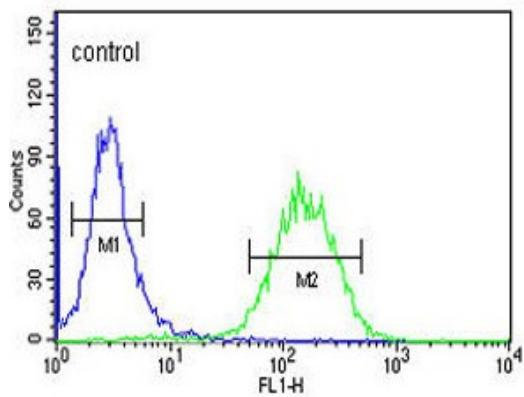


Western blot analysis of ACBG2 Antibody (Center) in K562 cell line lysates (35ug/lane). ACBG2 (arrow) was detected using the purified Pab



ACBG2 Antibody (Center) IHC analysis in formalin fixed and paraffin embedded mouse testis tissue followed by peroxidase conjugation of the secondary antibody and DAB staining. This data demonstrates the use of the ACBG2 Antibody (Center) for immunohistochemistry. Clinical relevance has not been evaluated.

K562



ACBG2 Antibody (Center) flow cytometric analysis of K562 cells (right histogram) compared to a negative control cell (left histogram).FITC-conjugated goat-anti-rabbit secondary antibodies were used for the analysis.