

## Product datasheet for **AP50037PU-N**

### ACAD8 (Center) Rabbit Polyclonal Antibody

#### Product data:

Product Type:	Primary Antibodies
Applications:	WB
Recommended Dilution:	<b>ELISA:</b> 1/1000. <b>Western blotting:</b> 1/100 - 1/500.
Reactivity:	Human, Mouse
Host:	Rabbit
Isotype:	Ig
Clonality:	Polyclonal
Immunogen:	KLH conjugated synthetic peptide between 125~154 amino acids from the Central region of human ACAD8
Specificity:	This antibody reacts to ACAD8.
Formulation:	PBS with 0.09% (W/V) sodium azide as preservative State: Aff - Purified State: Liquid purified Ig fraction
Concentration:	lot specific
Purification:	Affinity chromatography on Protein A
Conjugation:	Unconjugated
Storage:	Store the antibody undiluted at 2-8°C for one month or (in aliquots) at -20°C for longer. Avoid repeated freezing and thawing.
Stability:	Shelf life: one year from despatch.
Gene Name:	acyl-CoA dehydrogenase family member 8
Database Link:	<a href="#">Entrez Gene 66948 Mouse</a> <a href="#">Entrez Gene 27034 Human</a> <a href="#">Q9UKU7</a>
Background:	ACAD8 is a member of the acyl-CoA dehydrogenase family of enzymes that catalyze the dehydrogenation of acyl-CoA derivatives in the metabolism of fatty acids or branch chained amino acids. This protein is a mitochondrial enzyme that functions in catabolism of the branched-chain amino acid valine.
Synonyms:	ARC42, IBD



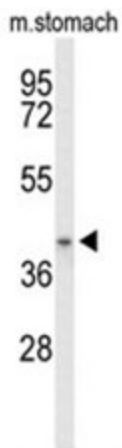
[View online »](#)

Note: **Molecular Weight:** 45070 Da

Protein Families: Transcription Factors

Protein Pathways: Metabolic pathways, Valine, leucine and isoleucine degradation

### Product images:



Western blot analysis of ACAD8 Antibody (Center) in mouse stomach tissue lysates (35 ug/lane). ACAD8 (arrow) was detected using the purified Pab