

Product datasheet for **AP50033PU-N**

STARS (ABRA) (C-term) Rabbit Polyclonal Antibody

Product data:

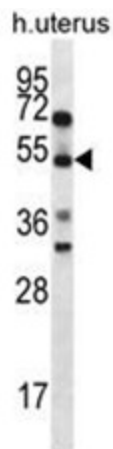
Product Type:	Primary Antibodies
Applications:	IHC, WB
Recommended Dilution:	ELISA: 1/1000. Western blotting: 1/100 - 1/500. Immunohistochemistry: 1/10 - 1/50.
Reactivity:	Human
Host:	Rabbit
Isotype:	Ig
Clonality:	Polyclonal
Immunogen:	KLH conjugated synthetic peptide between 282-312 amino acids from the C-terminal region of human ABRA
Specificity:	This antibody reacts to ABRA / STARS.
Formulation:	PBS containing 0.09% (W/V) sodium azide as preservative State: Aff - Purified State: Liquid purified Ig fraction
Concentration:	lot specific
Purification:	Affinity chromatography on Protein A
Conjugation:	Unconjugated
Storage:	Store the antibody undiluted at 2-8°C for one month or (in aliquots) at -20°C for longer. Avoid repeated freezing and thawing.
Stability:	Shelf life: one year from despatch.
Gene Name:	actin binding Rho activating protein
Database Link:	Entrez Gene 137735 Human Q8N0Z2
Background:	ABRA acts as an activator of serum response factor (SRF)-dependent transcription possibly by inducing nuclear translocation of MKL1 or MKL2 and through a mechanism requiring Rho-actin signaling (By similarity).
Synonyms:	STARS



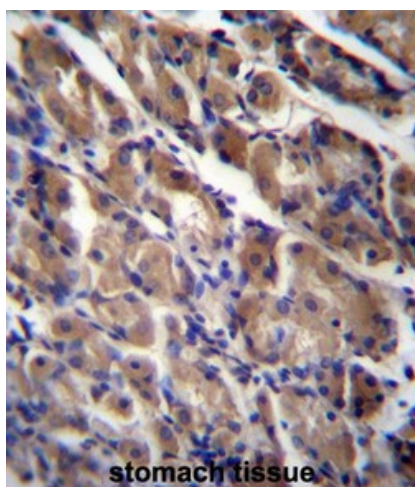
[View online »](#)

Note: **Molecular Weight:** 43117 Da

Product images:



ABRA Antibody (C-term) western blot analysis in human normal Uterus cell line lysates (35ug/lane). This demonstrates the ABRA antibody detected the ABRA protein (arrow).



ABRA Antibody (C-term) immunohistochemistry analysis in formalin fixed and paraffin embedded human stomach tissue followed by peroxidase conjugation of the secondary antibody and DAB staining. This data demonstrates the use of ABRA Antibody (C-term) for immunohistochemistry. Clinical relevance has not been evaluated.