

Product datasheet for **AP50030PU-N**

ABI2 (N-term) Rabbit Polyclonal Antibody

Product data:

Product Type:	Primary Antibodies
Applications:	WB
Recommended Dilution:	ELISA: 1/1000. Western blotting: 1/100 - 1/500.
Reactivity:	Human, Mouse
Host:	Rabbit
Isotype:	Ig
Clonality:	Polyclonal
Immunogen:	KLH conjugated synthetic peptide between 1-30 amino acids from the N-terminal region of human ABI2
Specificity:	This antibody reacts to ABI2.
Formulation:	PBS containing 0.09% (W/V) sodium azide as preservative State: Aff - Purified State: Liquid purified Ig fraction
Concentration:	lot specific
Purification:	Affinity chromatography on Protein A
Conjugation:	Unconjugated
Storage:	Store the antibody undiluted at 2-8°C for one month or (in aliquots) at -20°C for longer. Avoid repeated freezing and thawing.
Stability:	Shelf life: one year from despatch.
Gene Name:	abl-interactor 2
Database Link:	Entrez Gene 329165 Mouse Entrez Gene 10152 Human Q9NYB9
Background:	ABI2 may act in regulation of cell growth and transformation by interacting with nonreceptor tyrosine kinases ABL1 and/or ABL2. May be involved in cytoskeletal reorganization. Regulates ABL1/c-Abl-mediated phosphorylation of MENA.
Synonyms:	Abl interactor 2, ARGBPIA, Abelson interactor 2, Abl-binding protein 3, Arg-binding protein 1, argBPIA

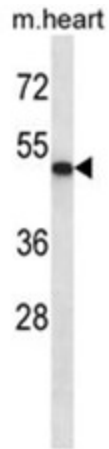


[View online »](#)

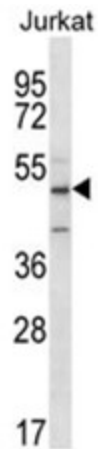
Note: **Molecular Weight:** 55663 Da

Protein Pathways: Regulation of actin cytoskeleton

Product images:



ABI2 Antibody (N-term) western blot analysis in mouse heart tissue lysates (35 ug/lane). This demonstrates the ABI2 antibody detected the ABI2 protein (arrow).



ABI2 Antibody (N-term) western blot analysis in Jurkat cell line lysates (35 ug/lane). This demonstrates the ABI2 antibody detected the ABI2 protein (arrow).