

## Product datasheet for **AP50029PU-N**

### **ABHD14B (C-term) Rabbit Polyclonal Antibody**

#### **Product data:**

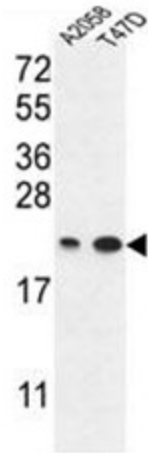
Product Type:	Primary Antibodies
Applications:	FC, IHC, WB
Recommended Dilution:	<b>ELISA:</b> 1/1000. <b>Western blotting:</b> 1/100 - 1/500. <b>Immunohistochemistry:</b> 1/50 - 1/100.
Reactivity:	Human
Host:	Rabbit
Isotype:	Ig
Clonality:	Polyclonal
Immunogen:	Immunized with a KLH conjugated synthetic peptide between 150-179 amino acids from the C-terminal region of human ABHEB
Specificity:	This antibody reacts to ABHD14B.
Formulation:	PBS containing 0.09% (W/V) sodium azide as preservative State: Aff - Purified State: Liquid purified Ig fraction
Concentration:	lot specific
Purification:	Affinity chromatography on Protein A
Conjugation:	Unconjugated
Storage:	Store the antibody undiluted at 2-8°C for one month or (in aliquots) at -20°C for longer. Avoid repeated freezing and thawing.
Stability:	Shelf life: one year from despatch.
Gene Name:	abhydrolase domain containing 14B
Database Link:	<a href="#">Entrez Gene 84836 Human</a> <a href="#">Q96IU4</a>
Background:	ABHEB has hydrolase activity towards p-nitrophenyl butyrate (in vitro). It may activate transcription.
Synonyms:	CIB



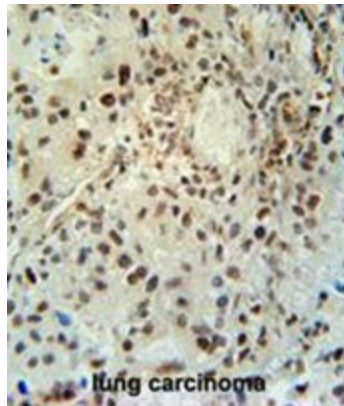
[View online »](#)

Note: **Molecular Weight:** 22346 Da

**Product images:**

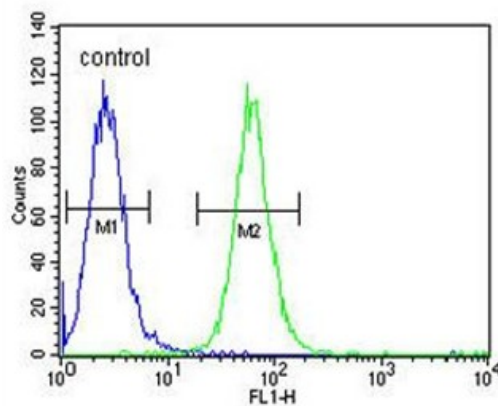


ABHEB Antibody (C-term) (Cat. #AP50029PU-N) western blot analysis in A2058, T47D cell line lysates (35 ug/lane). This demonstrates the ABHEB antibody detected the ABHEB protein (arrow).



ABHEB Antibody (C-term) (Cat. #AP50029PU-N) immunohistochemistry analysis in formalin fixed and paraffin embedded human lung carcinoma followed by peroxidase conjugation of the secondary antibody and DAB staining. This data demonstrates the use of the ABHEB Antibody (C-term) for immunohistochemistry. Clinical relevance has not been evaluated.

**A2058**



ABHEB Antibody (C-term) (Cat. #AP50029PU-N) flow cytometric analysis of A2058 cells (right histogram) compared to a negative control cell (left histogram). FITC-conjugated goat-anti-rabbit secondary antibodies were used for the analysis.