

## Product datasheet for **AP50027PU-N**

### **ABHD8 (C-term) Rabbit Polyclonal Antibody**

#### **Product data:**

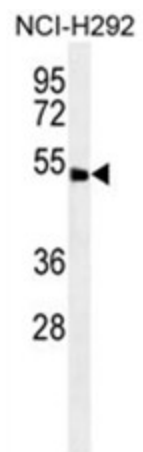
Product Type:	Primary Antibodies
Applications:	WB
Recommended Dilution:	<b>ELISA:</b> 1/1000. <b>Western blotting:</b> 1/100 - 1/500.
Reactivity:	Human
Host:	Rabbit
Isotype:	Ig
Clonality:	Polyclonal
Immunogen:	KLH conjugated synthetic peptide between 410-439 amino acids from the C-terminal region of human ABHD8
Specificity:	This antibody reacts to ABHD8.
Formulation:	PBS containing 0.09% (W/V) sodium azide as preservative State: Aff - Purified State: Liquid purified Ig fraction
Concentration:	lot specific
Purification:	Affinity chromatography on Protein A
Conjugation:	Unconjugated
Storage:	Store the antibody undiluted at 2-8°C for one month or (in aliquots) at -20°C for longer. Avoid repeated freezing and thawing.
Stability:	Shelf life: one year from despatch.
Gene Name:	abhydrolase domain containing 8
Database Link:	<a href="#">Entrez Gene 79575 Human Q96I13</a>
Background:	This gene is upstream of, and in a head-to-head orientation with the gene for the mitochondrial ribosomal protein L34. The predicted protein contains alpha/beta hydrolase fold and secretory lipase domains.
Synonyms:	FLJ11743; MGC2512; MGC14280



[View online »](#)

Note: **Molecular Weight:** 47331 Da

**Product images:**



ABHD8 Antibody (C-term) western blot analysis in NCI-H292 cell line lysates (35 ug/lane). This demonstrates the ABHD8 antibody detected the ABHD8 protein (arrow).