

Product datasheet for **AP50026PU-N**

ABHD2 (Center) Rabbit Polyclonal Antibody

Product data:

Product Type:	Primary Antibodies
Applications:	IHC, WB
Recommended Dilution:	ELISA: 1/1000. Western blotting: 1/100 - 1/500. Immunohistochemistry: 1/10 - 1/50.
Reactivity:	Human
Host:	Rabbit
Isotype:	Ig
Clonality:	Polyclonal
Immunogen:	KLH conjugated synthetic peptide between 262-292 amino acids from the Central region of human ABHD2
Specificity:	This antibody reacts to ABHD2 / LABH2.
Formulation:	PBS containing 0.09% (W/V) sodium azide as preservative State: Aff - Purified State: Liquid purified Ig fraction
Concentration:	lot specific
Purification:	Affinity chromatography on Protein A
Conjugation:	Unconjugated
Storage:	Store the antibody undiluted at 2-8°C for one month or (in aliquots) at -20°C for longer. Avoid repeated freezing and thawing.
Stability:	Shelf life: one year from despatch.
Gene Name:	abhydrolase domain containing 2
Database Link:	Entrez Gene 11057 Human P08910
Background:	This gene encodes a protein containing an alpha/beta hydrolase fold, which is a catalytic domain found in a very wide range of enzymes. The function of this protein has not been determined. Alternative splicing of this gene results in two transcript variants encoding the same protein. [provided by RefSeq].

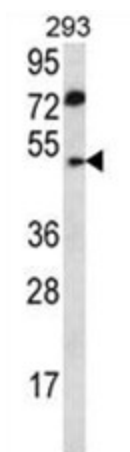


[View online »](#)

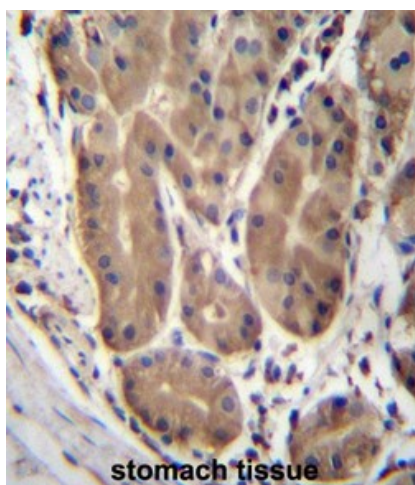
Synonyms: PHP51-2

Note: **Molecular Weight:** 48315 Da

Product images:



ABHD2 Antibody (Center) western blot analysis in 293 cell line lysates (35 ug/lane). This demonstrates the ABHD2 antibody detected the ABHD2 protein (arrow).



ABHD2 Antibody (Center) immunohistochemistry analysis in formalin fixed and paraffin embedded human stomach tissue followed by peroxidase conjugation of the secondary antibody and DAB staining. This data demonstrates the use of ABHD2 Antibody (Center) for immunohistochemistry. Clinical relevance has not been evaluated.