

## Product datasheet for **AP50024PU-N**

### **ABCG4 (N-term) Rabbit Polyclonal Antibody**

#### **Product data:**

Product Type:	Primary Antibodies
Applications:	WB
Recommended Dilution:	<b>ELISA:</b> 1/1000. <b>Western blotting:</b> 1/100 - 1/500.
Reactivity:	Human
Host:	Rabbit
Isotype:	Ig
Clonality:	Polyclonal
Immunogen:	KLH conjugated synthetic peptide between 43-73 amino acids from the N-terminal region of human ABCG4
Specificity:	This antibody reacts to ABCG4.
Formulation:	PBS containing 0.09% (W/V) sodium azide as preservative State: Aff - Purified State: Liquid purified Ig fraction
Concentration:	lot specific
Purification:	Affinity chromatography on Protein A
Conjugation:	Unconjugated
Storage:	Store the antibody undiluted at 2-8°C for one month or (in aliquots) at -20°C for longer. Avoid repeated freezing and thawing.
Stability:	Shelf life: one year from despatch.
Gene Name:	ATP binding cassette subfamily G member 4
Database Link:	<a href="#">Entrez Gene 64137 Human Q9H172</a>



[View online »](#)

**Background:**

The protein encoded by this gene is included in the superfamily of ATP-binding cassette (ABC) transporters. ABC proteins transport various molecules across extra- and intra-cellular membranes. ABC genes are divided into seven distinct subfamilies (ABC1, MDR/TAP, MRP, ALD, OABP, GCN20, White). This protein is a member of the White subfamily and is expressed predominantly in liver tissue. The function has not yet been determined but may involve cholesterol transport. Alternate splice variants have been described but their full length sequences have not been determined.

**Synonyms:**

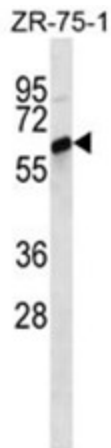
WHITE2

**Note:****Molecular Weight:** 71896 Da**Protein Families:**

Druggable Genome, Transmembrane

**Protein Pathways:**

ABC transporters

**Product images:**

ABCG4 Antibody (N-term) western blot analysis in ZR-75-1 cell line lysates (35 ug/lane). This demonstrates the ABCG4 antibody detected the ABCG4 protein (arrow).