

Product datasheet for **AP50022PU-N**

ABCF1 (C-term) Rabbit Polyclonal Antibody

Product data:

Product Type:	Primary Antibodies
Applications:	IHC, WB
Recommended Dilution:	ELISA: 1/1000. Western blotting: 1/100 - 1/500. Immunohistochemistry: 1/50 - 1/100.
Reactivity:	Human, Mouse
Host:	Rabbit
Isotype:	Ig
Clonality:	Polyclonal
Immunogen:	KLH conjugated synthetic peptide between 694~724 amino acids from the C-terminal region of human ABCF1
Specificity:	This antibody reacts to ABCF1.
Formulation:	PBS containing 0.09% (W/V) sodium azide as preservative State: Aff - Purified State: Liquid purified Ig fraction
Concentration:	lot specific
Purification:	Affinity chromatography on Protein A
Conjugation:	Unconjugated
Storage:	Store the antibody undiluted at 2-8°C for one month or (in aliquots) at -20°C for longer. Avoid repeated freezing and thawing.
Stability:	Shelf life: one year from despatch.
Gene Name:	ATP binding cassette subfamily F member 1
Database Link:	Entrez Gene 224742 Mouse Entrez Gene 23 Human Q8NE71



[View online »](#)

Background:

The protein is a member of the superfamily of ATP-binding cassette (ABC) transporters. ABC proteins transport various molecules across extra- and intra-cellular membranes. ABC proteins are divided into seven distinct subfamilies (ABC1, MDR/TAP, MRP, ALD, OABP, GCN20, White). This protein is a member of the GCN20 subfamily. Unlike other members of the superfamily, this protein lacks the transmembrane domains which are characteristic of most ABC transporters. This protein may be regulated by tumor necrosis factor-alpha and play a role in enhancement of protein synthesis and the inflammation process.

Synonyms:

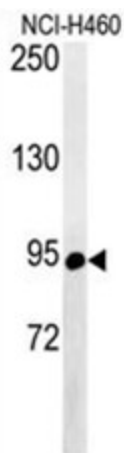
ABC50

Note:

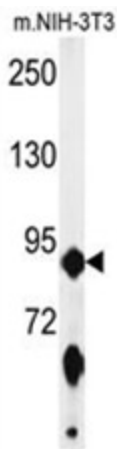
Molecular Weight: 95926 Da

Protein Families:

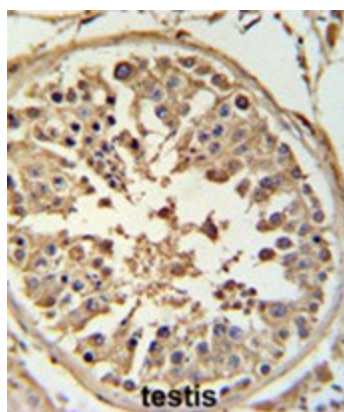
Druggable Genome

Product images:


Western blot analysis of ABCF1 Antibody (C-term)? #) in NCI-H460 cell line lysates (35ug/lane). ABCF1 (arrow) was detected using the purified Pab.



Western blot analysis of ABCF1 Antibody (C-term) in mouse NIH-3T3 cell line lysates (35 ug/lane). ABCF1 (arrow) was detected using the purified Pab.



ABCF1 Antibody (C-term) IHC analysis in formalin fixed and paraffin embedded human testis tissue followed by peroxidase conjugation of the secondary antibody and DAB staining. This data demonstrates the use of the ABCF1 Antibody (C-term) for immunohistochemistry. Clinical relevance has not been evaluated.