

## Product datasheet for **AP50018PU-N**

### ABCD2 (Center) Rabbit Polyclonal Antibody

#### Product data:

Product Type:	Primary Antibodies
Applications:	WB
Recommended Dilution:	<b>ELISA:</b> 1/1000. <b>Western blotting:</b> 1/100 - 1/500.
Reactivity:	Human, Mouse
Host:	Rabbit
Isotype:	Ig
Clonality:	Polyclonal
Immunogen:	KLH conjugated synthetic peptide between 276~306 amino acids from the Central region of human ABCD2.
Specificity:	This antibody reacts to ABCD2.
Formulation:	PBS containing 0.09% (W/V) sodium azide as preservative State: Aff - Purified State: Liquid purified Ig fraction
Concentration:	lot specific
Purification:	Affinity chromatography on Protein A
Conjugation:	Unconjugated
Storage:	Store the antibody undiluted at 2-8°C for one month or (in aliquots) at -20°C for longer. Avoid repeated freezing and thawing.
Stability:	Shelf life: one year from despatch.
Gene Name:	ATP binding cassette subfamily D member 2
Database Link:	<a href="#">Entrez Gene 26874 Mouse</a> <a href="#">Entrez Gene 225 Human</a> <a href="#">Q9UBJ2</a>



[View online »](#)

**Background:**

ABCD2 is a member of the superfamily of ATP-binding cassette (ABC) transporters. ABC proteins transport various molecules across extra- and intra-cellular membranes. ABC genes are divided into seven distinct subfamilies (ABC1, MDR/TAP, MRP, ALD, OABP, GCN20, White). This protein is a member of the ALD subfamily, which is involved in peroxisomal import of fatty acids and/or fatty acyl-CoAs in the organelle. All known peroxisomal ABC transporters are half transporters which require a partner half transporter molecule to form a functional homodimeric or heterodimeric transporter. The function of this peroxisomal membrane protein is unknown; however this protein is speculated to function as a dimerization partner of ABCD1 and/or other peroxisomal ABC transporters.

**Synonyms:**

Adrenoleukodystrophy-related protein, Adrenoleukodystrophy-like 1, ALD1, ALDL1, ALDRP

**Note:**

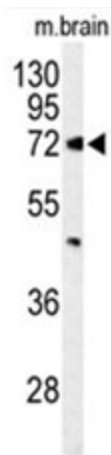
**Molecular Weight:** 83233 Da

**Protein Families:**

Druggable Genome

**Protein Pathways:**

ABC transporters

**Product images:**

Western blot analysis of ABCD2 Antibody (Center) in mouse brain tissue lysates (35 ug/lane). ABCD2 (arrow) was detected using the purified Pab.