

Product datasheet for **AP50015PU-N**

MRP3 (ABCC3) (Center) Rabbit Polyclonal Antibody

Product data:

Product Type:	Primary Antibodies
Applications:	FC, IHC, WB
Recommended Dilution:	ELISA: 1/1000. Western blotting: 1/100 - 1/500. Immunohistochemistry: 1/50 - 1/100.
Reactivity:	Human
Host:	Rabbit
Isotype:	Ig
Clonality:	Polyclonal
Immunogen:	KLH conjugated synthetic peptide between 906-933 amino acids from the Central region of human ABCC3.
Specificity:	This antibody reacts to ABCC3.
Formulation:	PBS containing 0.09% (W/V) sodium azide as preservative State: Aff - Purified State: Liquid purified Ig fraction
Concentration:	lot specific
Purification:	Affinity chromatography on Protein A
Conjugation:	Unconjugated
Storage:	Store the antibody undiluted at 2-8°C for one month or (in aliquots) at -20°C for longer. Avoid repeated freezing and thawing.
Stability:	Shelf life: one year from despatch.
Gene Name:	ATP binding cassette subfamily C member 3
Database Link:	Entrez Gene 8714 Human O15438



[View online »](#)

Background:

The protein encoded by this gene is a member of the superfamily of ATP-binding cassette (ABC) transporters. ABC proteins transport various molecules across extra- and intra-cellular membranes. ABC genes are divided into seven distinct subfamilies (ABC1, MDR/TAP, MRP, ALD, OABP, GCN20, White). This protein is a member of the MRP subfamily which is involved in multi-drug resistance. The specific function of this protein has not yet been determined; however, this protein may play a role in the transport of biliary and intestinal excretion of organic anions. Alternatively spliced variants which encode different protein isoforms have been described; however, not all variants have been fully characterized.

Synonyms:

Multidrug resistance-associated protein 3, MLP2

Note:

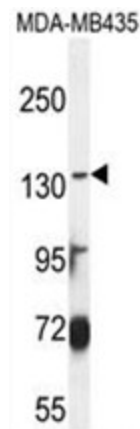
Molecular Weight: 169343 Da

Protein Families:

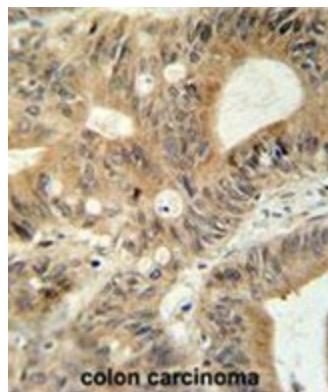
Druggable Genome, Transmembrane

Protein Pathways:

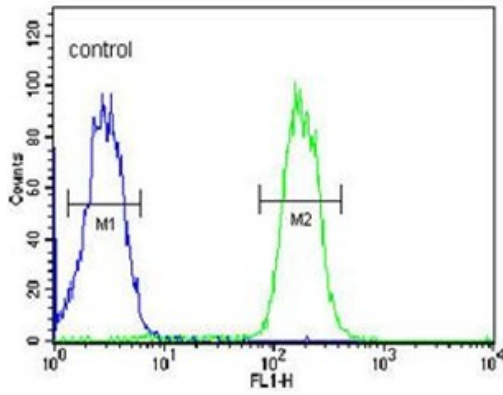
ABC transporters

Product images:

ABCC3 Antibody (Center) western blot analysis in MDA-MB435 cell line lysates (35 ug/lane). This demonstrates the ABCC3 antibody detected the ABCC3 protein (arrow).



ABCC3 antibody (Center) immunohistochemistry analysis in formalin fixed and paraffin embedded human colon carcinoma followed by peroxidase conjugation of the secondary antibody and DAB staining. This data demonstrates the use of the ABCC3 antibody (Center) for immunohistochemistry. Clinical relevance has not been evaluated.

MDA-MB435

ABCC3 Antibody (Center) flow cytometric analysis of MDA-MB435 cells (right histogram) compared to a negative control cell (left histogram). FITC-conjugated goat-anti-rabbit secondary antibodies were used for the analysis.