

## Product datasheet for **AP50011PU-N**

### Serotonin N acetyltransferase (AANAT) (N-term) Rabbit Polyclonal Antibody

#### Product data:

Product Type:	Primary Antibodies
Applications:	WB
Recommended Dilution:	<b>ELISA:</b> 1/1000. <b>Western blotting:</b> 1/100 - 1/500.
Reactivity:	Human
Host:	Rabbit
Isotype:	Ig
Clonality:	Polyclonal
Immunogen:	KLH conjugated synthetic peptide between 33–63 amino acids from the N-terminal region of human AANAT
Specificity:	This antibody reacts to Serotonin acetylase.
Formulation:	PBS containing 0.09% (W/V) sodium azide as preservative State: Aff - Purified State: Liquid purified Ig fraction
Concentration:	lot specific
Purification:	Affinity chromatography on Protein A
Conjugation:	Unconjugated
Storage:	Store the antibody undiluted at 2-8°C for one month or (in aliquots) at -20°C for longer. Avoid repeated freezing and thawing.
Stability:	Shelf life: one year from despatch.
Gene Name:	aralkylamine N-acetyltransferase
Database Link:	<a href="#">Entrez Gene 15 Human Q16613</a>



[View online »](#)

**Background:**

AANAT belongs to the acetyltransferase superfamily. It is the penultimate enzyme in melatonin synthesis and controls the night/day rhythm in melatonin production in the vertebrate pineal gland. Melatonin is essential for the function of the circadian clock that influences activity and sleep. This enzyme is regulated by cAMP-dependent phosphorylation that promotes its interaction with 14-3-3 proteins and thus protects the enzyme against proteasomal degradation. This gene may contribute to numerous genetic diseases such as delayed sleep phase syndrome.

**Synonyms:**

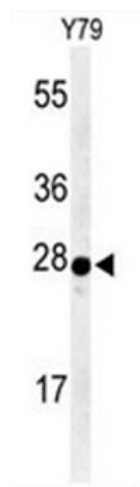
AANAT, AA-NAT, SNAT, Serotonin N-acetyltransferase

**Note:**

**Molecular Weight:** 23344 Da

**Protein Pathways:**

Metabolic pathways, Tryptophan metabolism

**Product images:**

Western blot analysis of AANAT Antibody (N-term) in Y79 cell line lysates (35 ug/lane). AANAT (arrow) was detected using the purified Pab