

## Product datasheet for **AP50007PU-N**

### alpha 2 Macroglobulin (A2M) (N-term) Rabbit Polyclonal Antibody

#### Product data:

|                       |   |
|-----------------------|---|
| Product Type:         | Primary Antibodies  |
| Applications:         | WB  |
| Recommended Dilution: | <b>ELISA:</b> 1/1000.<br><b>Western blotting:</b> 1/100 - 1/500.  |
| Reactivity:           | Human   |
| Host:                 | Rabbit  |
| Isotype:              | Ig  |
| Clonality:            | Polyclonal  |
| Immunogen:            | KLH conjugated synthetic peptide between 92-120 amino acids from the N-terminal region of human A2M.  |
| Specificity:          | This antibody reacts to Alpha-2-macroglobulin.  |
| Formulation:          | PBS containing 0.09% (W/V) sodium azide as preservative<br>State: Aff - Purified<br>State: Liquid purified Ig fraction  |
| Concentration:        | lot specific  |
| Purification:         | Affinity chromatography on Protein A  |
| Conjugation:          | Unconjugated  |
| Storage:              | Store the antibody undiluted at 2-8°C for one month or (in aliquots) at -20°C for longer.<br>Avoid repeated freezing and thawing.   |
| Stability:            | Shelf life: one year from despatch.   |
| Gene Name:            | alpha-2-macroglobulin   |
| Database Link:        | <a href="#">Entrez Gene 2 Human P01023</a>  |
| Background:           | Alpha-2-macroglobulin is a protease inhibitor and cytokine transporter. It inhibits many proteases, including trypsin, thrombin and collagenase. A2M is implicated in Alzheimer disease (AD) due to its ability to mediate the clearance and degradation of A-beta, the major component of beta-amyloid deposits. [provided by RefSeq]. |
| Synonyms:             | Alpha-2-M, CPAMD5, Alpha 2 macroglobulin  |



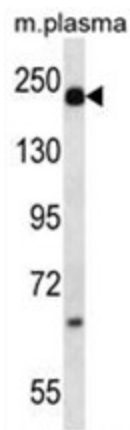
[View online »](#)

**Note:** **Molecular Weight:** 163291 Da

**Protein Families:** Druggable Genome, Secreted Protein

**Protein Pathways:** Complement and coagulation cascades

**Product images:**



A2M Antibody (N-term) western blot analysis in mouse plasma lysates (35 g/lane). This demonstrates the A2M antibody detected the A2M protein (arrow)