

Product datasheet for **AP50006PU-N**

alpha 2 Macroglobulin (A2M) (C-term) Rabbit Polyclonal Antibody

Product data:

Product Type:	Primary Antibodies
Applications:	WB
Recommended Dilution:	ELISA: 1/1000. Western blotting: 1/100 - 1/500.
Reactivity:	Human
Host:	Rabbit
Isotype:	Ig
Clonality:	Polyclonal
Immunogen:	KLH conjugated synthetic peptide between 1161-1192 amino acids from the C-terminal region of human A2M
Specificity:	This antibody reacts to Alpha-2-macroglobulin.
Formulation:	PBS containing 0.09% (W/V) sodium azide as preservative State: Aff - Purified State: Liquid purified Ig fraction
Concentration:	lot specific
Purification:	Affinity chromatography on Protein A
Conjugation:	Unconjugated
Storage:	Store the antibody undiluted at 2-8°C for one month or (in aliquots) at -20°C for longer. Avoid repeated freezing and thawing.
Stability:	Shelf life: one year from despatch.
Gene Name:	alpha-2-macroglobulin
Database Link:	Entrez Gene 2 Human P01023
Background:	Alpha-2-macroglobulin is a protease inhibitor and cytokine transporter. It inhibits many proteases, including trypsin, thrombin and collagenase. A2M is implicated in Alzheimer disease (AD) due to its ability to mediate the clearance and degradation of A-beta, the major component of beta-amyloid deposits. [provided by RefSeq].
Synonyms:	Alpha-2-M, CPAMD5, Alpha 2 macroglobulin



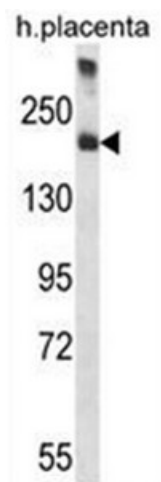
[View online »](#)

Note: **Molecular Weight:** 163291 Da

Protein Families: Druggable Genome, Secreted Protein

Protein Pathways: Complement and coagulation cascades

Product images:



A2M Antibody (C-term) western blot analysis in human placenta tissue lysates (35ug/lane). This demonstrates the A2M antibody detected the A2M protein (arrow)