

## Product datasheet for **AP50004PU-N**

### **A1BG (Center) Rabbit Polyclonal Antibody**

#### **Product data:**

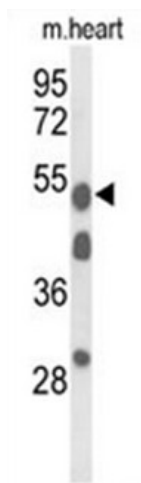
|                       |   |
|-----------------------|---|
| Product Type:         | Primary Antibodies  |
| Applications:         | WB  |
| Recommended Dilution: | <b>ELISA:</b> 1/1000.<br><b>Western blotting:</b> 1/50 - 1/100.   |
| Reactivity:           | Human, Mouse  |
| Host:                 | Rabbit  |
| Isotype:              | Ig  |
| Clonality:            | Polyclonal  |
| Immunogen:            | KLH conjugated synthetic peptide between 232~262 amino acids from the Central region of human A1BG.   |
| Specificity:          | This antibody reacts to Alpha-1B-glycoprotein.  |
| Formulation:          | PBS containing 0.09% (W/V) sodium azide as preservative<br>State: Purified<br>State: Liquid purified Ig fraction  |
| Concentration:        | lot specific  |
| Purification:         | Saturated Ammonium Sulfate (SAS) precipitation  |
| Conjugation:          | Unconjugated  |
| Storage:              | Store the antibody undiluted at 2-8°C for one month or (in aliquots) at -20°C for longer.<br>Avoid repeated freezing and thawing.   |
| Stability:            | Shelf life: one year from despatch.   |
| Gene Name:            | alpha-1-B glycoprotein  |
| Database Link:        | <a href="#">Entrez Gene 117586 Mouse</a> <a href="#">Entrez Gene 1 Human P04217</a>   |
| Background:           | A1BG is a plasma glycoprotein of unknown function. The protein shows sequence similarity to the variable regions of some immunoglobulin supergene family member proteins. |
| Synonyms:             | Alpha-1-B glycoprotein  |
| Note:                 | <b>Molecular Weight:</b> 54273 Da   |



[View online »](#)

Protein Families: Druggable Genome, ES Cell Differentiation/IPS, Secreted Protein

### Product images:



Western blot analysis of A1BG Antibody (Center) in mouse heart tissue lysates (35 ug/lane). A1BG (arrow) was detected using the purified Pab.