

Product datasheet for **AP50002PU-N**

5HT3E (HTR3E) (Center) Rabbit Polyclonal Antibody

Product data:

Product Type:	Primary Antibodies
Applications:	FC, WB
Recommended Dilution:	ELISA: 1/1000. Western blotting: 1/100 - 1/500 Flow Cytometry: 1/10 - 1/50.
Reactivity:	Human
Host:	Rabbit
Isotype:	Ig
Clonality:	Polyclonal
Immunogen:	KLH conjugated synthetic peptide between 133-162 amino acids from the Central region of human 5HT3E.
Specificity:	This antibody reacts to Serotonin receptor 3E.
Formulation:	PBS containing 0.09% (W/V) sodium azide as preservative State: Aff - Purified State: Liquid purified Ig fraction
Concentration:	lot specific
Purification:	Affinity chromatography on Protein A
Conjugation:	Unconjugated
Storage:	Store the antibody undiluted at 2-8°C for one month or (in aliquots) at -20°C for longer. Avoid repeated freezing and thawing.
Stability:	Shelf life: one year from despatch.
Gene Name:	5-hydroxytryptamine receptor 3E
Database Link:	Entrez Gene 285242 Human A5X5Y0



[View online »](#)

Background:

The product of this gene belongs to the ligand-gated ion channel receptor superfamily. HTR3E encodes a subunit E of the type 3 receptor for 5-hydroxytryptamine (serotonin), a biogenic hormone that functions as a neurotransmitter, a hormone, and a mitogen. This receptor causes fast, depolarizing responses in neurons after activation. Genes encoding subunits C, D and E form a cluster on chromosome 3. An alternative splice variant has been described but its full length sequence has not been determined.

Synonyms:

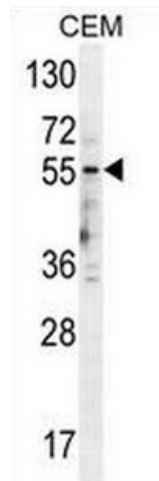
5-hydroxytryptamine receptor 3E, 5-HT3E

Note:

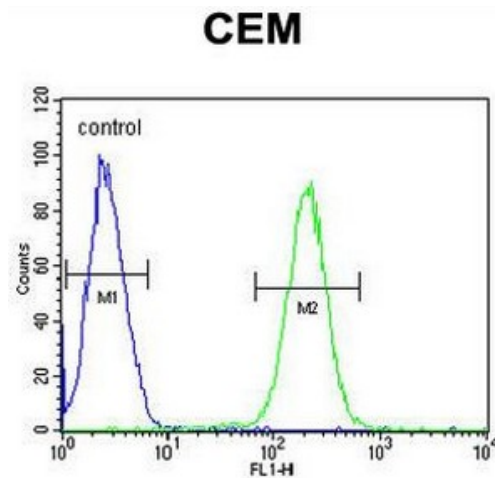
Molecular Weight: 51438 Da

Protein Families:

Druggable Genome, Ion Channels: Cys-loop Receptors, Transmembrane

Product images:


5HT3E Antibody (Center) western blot analysis in CEM cell line lysates (35 ug/lane). This demonstrates the 5HT3E antibody detected the 5HT3E protein (arrow)



5HT3E Antibody (Center) flow cytometric analysis of CEM cells (right histogram) compared to a negative control cell (left histogram). FITC-conjugated goat-anti-rabbit secondary antibodies were used for the analysis