

Product datasheet for **AP46301PU-N**

GBA (C-term) Rabbit Polyclonal Antibody

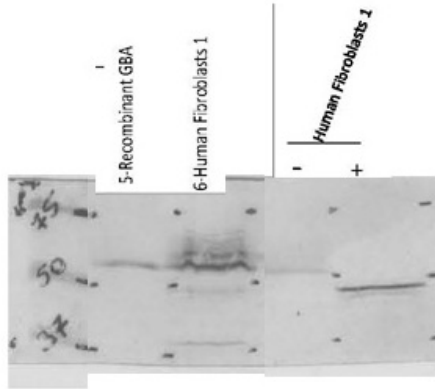
Product data:

Product Type:	Primary Antibodies
Applications:	WB
Recommended Dilution:	Western blotting (0.2 - 1 µg/ml)
Reactivity:	Human
Host:	Rabbit
Clonality:	Polyclonal
Immunogen:	Synthetic peptide directed towards the C-term region of human Glucosylceramidase
Formulation:	State: Aff - Purified State: Liquid. Purified antibody supplied in 1x PBS buffer with 0.09% (w/v) sodium azide and 2% sucrose. <i>Note that this product is shipped as lyophilized powder to China customers.</i>
Purification:	Purified using peptide immunoaffinity column
Conjugation:	Unconjugated
Storage:	Store undiluted at 2-8°C for one month or (in aliquots) at -20°C to -80°C for longer. Avoid repeated freezing and thawing.
Stability:	Shelf life: one year from despatch.
Gene Name:	glucosylceramidase beta
Database Link:	NP_000148 Entrez Gene 2629 Human P04062
Background:	This gene encodes a lysosomal membrane protein that cleaves the beta-glucosidic linkage of glycosylceramide, an intermediate in glycolipid metabolism. Mutations in this gene cause Gaucher disease, a lysosomal storage disease characterized by an accumulation of glucocerebrosides. A related pseudogene is approximately 12 kb downstream of this gene on chromosome 1. Alternative splicing results in multiple transcript variants.
Synonyms:	Beta-glucocerebrosidase, Alglucerase, Imiglucerase, GBA, GC, GLUC, Acid beta-glucosidase
Protein Families:	Druggable Genome
Protein Pathways:	Lysosome, Metabolic pathways, Other glycan degradation, Sphingolipid metabolism



[View online >](#)

Product images:



Human, Rat; WB Suggested Anti-GBA Antibody Primary: 1:1000. Positive Control: rat organs, fibroblasts, HeLa cell lysate; GBA antibody - C-terminal region (AP46301PU-N) in Human, Rat cells using Western Blot



Human MDA-MB435; WB Suggested Anti-GBA Antibody Titration: 1 ug/ml. Positive Control: MDA-MB-435S cell lysate. GBA is strongly supported by BioGPS gene expression data to be expressed in Human MDA-MB435 cells.; GBA antibody - C-terminal region (AP46301PU-N) in Human MDA-MB435 cells using Western Blot