

Product datasheet for **AP46292PU-N**

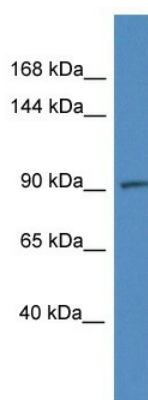
ADAMTS6 (C-term) Rabbit Polyclonal Antibody

Product data:

Product Type:	Primary Antibodies
Applications:	WB
Recommended Dilution:	Western blotting (0.2 - 1.0 µg/ml)
Reactivity:	Human
Host:	Rabbit
Clonality:	Polyclonal
Immunogen:	Synthetic peptide directed towards the C terminal of human ADAMTS6
Formulation:	State: Aff - Purified State: Liquid. Purified antibody supplied in 1x PBS buffer with 0.09% (w/v) sodium azide and 2% sucrose. <i>Note that this product is shipped as lyophilized powder to China customers.</i>
Purification:	Purified using peptide immunoaffinity column
Conjugation:	Unconjugated
Storage:	Store undiluted at 2-8°C for one month or (in aliquots) at -20°C to -80°C for longer. Avoid repeated freezing and thawing.
Stability:	Shelf life: one year from despatch.
Gene Name:	ADAM metalloproteinase with thrombospondin type 1 motif 6
Database Link:	NP_922932 Entrez Gene 11174 Human Q9UKP5
Background:	This gene encodes a member of the ADAMTS (a disintegrin and metalloproteinase with thrombospondin motifs) protein family. Members of the family share several distinct protein modules, including a propeptide region, a metalloproteinase domain, a disintegrin-like domain, and a thrombospondin type 1 (TS) motif. Individual members of this family differ in the number of C-terminal TS motifs, and some have unique C-terminal domains.
Synonyms:	ADAMTS-6, ADAM-TS6
Protein Families:	Protease



[View online »](#)

Product images:

Human RPMI-8226; WB Suggested Anti-ADAMTS6 Antibody. Titration: 1.0 ug/ml. Positive Control: RPMI-8226 Whole Cell. ADAMTS6 is supported by BioGPS gene expression data to be expressed in RPMI 8226.; ADAMTS6 antibody - C-terminal region (AP46292PU-N) in Human RPMI-8226 cells using Western Blot