

Product datasheet for **AP46163PU-N**

Rpia (Center) Rabbit Polyclonal Antibody

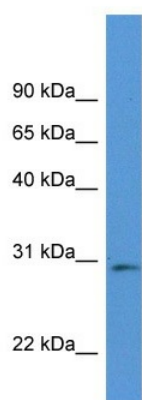
Product data:

Product Type:	Primary Antibodies
Applications:	WB
Recommended Dilution:	Western blotting (1 µg/ml).
Reactivity:	Human, Mouse
Host:	Rabbit
Clonality:	Polyclonal
Immunogen:	Synthetic peptide directed towards the middle region of mouse Rpia
Formulation:	State: Aff - Purified State: Liquid. Purified antibody supplied in 1x PBS buffer with 0.09% (w/v) sodium azide and 2% sucrose. <i>Note that this product is shipped as lyophilized powder to China customers.</i>
Purification:	Immunoaffinity column
Conjugation:	Unconjugated
Storage:	Store undiluted at 2-8°C for one month or (in aliquots) at -20°C to -80°C for longer. Avoid repeated freezing and thawing.
Stability:	Shelf life: one year from despatch.
Predicted Protein Size:	Rpia: 32 kDa
Gene Name:	ribose 5-phosphate isomerase A
Database Link:	NP_033101 Entrez Gene 22934 Human Entrez Gene 19895 Mouse P47968
Synonyms:	ROI, Phosphoriboisomerase



[View online »](#)

Product images:



Mouse Pancreas; WB Suggested Anti-Rpia Antibody. Titration: 1.0 ug/ml. Positive Control: Mouse Pancreas; Rpia antibody - middle region (AP46163PU-N) in Mouse Pancreas cells using Western Blot