

Product datasheet for **AP46042PU-N**

ATP6AP1 (Center) Rabbit Polyclonal Antibody

Product data:

Product Type:	Primary Antibodies
Applications:	WB
Recommended Dilution:	Western blotting (0.2 - 1 µg/ml)
Reactivity:	Canine, Equine, Human, Mouse, Rabbit, Rat
Host:	Rabbit
Clonality:	Polyclonal
Immunogen:	Synthetic peptide directed towards the middle region of human ATP6AP1
Formulation:	State: Aff - Purified State: Liquid. Purified antibody supplied in 1x PBS buffer with 0.09% (w/v) sodium azide and 2% sucrose. <i>Note that this product is shipped as lyophilized powder to China customers.</i>
Purification:	Purified using peptide immunoaffinity column
Conjugation:	Unconjugated
Storage:	Store undiluted at 2-8°C for one month or (in aliquots) at -20°C to -80°C for longer. Avoid repeated freezing and thawing.
Stability:	Shelf life: one year from despatch.
Gene Name:	ATPase H ⁺ transporting accessory protein 1
Database Link:	NP_001174 Entrez Gene 54411 MouseEntrez Gene 83615 RatEntrez Gene 537 Human Q15904
Background:	This gene encodes a component of a multisubunit enzyme (1 mDa MW) that mediates acidification of eukaryotic intracellular organelles. Vacuolar ATPase (V-ATPase) is comprised of a cytosolic V1 (site of the ATP catalytic site) and a transmembrane V0 domain. V-ATPase dependent organelle acidification is necessary for such intracellular processes as protein sorting, zymogen activation, and receptor-mediated endocytosis. The encoded protein of this gene is approximately 45 kD and may assist in the V-ATPase-mediated acidification of neuroendocrine secretory granules.
Synonyms:	V-ATPase subunit S1, Protein XAP-3, ATP6IP1, ATP6S1, VATPS1, XAP3

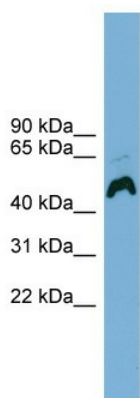


[View online »](#)

Protein Families: Transmembrane

Protein Pathways: Epithelial cell signaling in Helicobacter pylori infection, Lysosome, Metabolic pathways, Oxidative phosphorylation, Vibrio cholerae infection

Product images:



Human OVCAR-3; WB Suggested Anti-ATP6AP1 Antibody Titration: 0.2-1 μ g/ml. ELISA Titer: 1:312500. Positive Control: OVCAR-3 cell lysate; ATP6AP1 antibody - middle region (AP46042PU-N) in Human OVCAR-3 cells using Western Blot