

## Product datasheet for **AP46026PU-N**

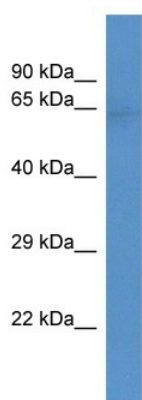
### Slc22a3 (Center) Rabbit Polyclonal Antibody

#### Product data:

Product Type:	Primary Antibodies
Applications:	WB
Recommended Dilution:	Western blotting (1 µg/ml).
Reactivity:	Human, Mouse
Host:	Rabbit
Clonality:	Polyclonal
Immunogen:	Synthetic peptide directed towards the middle region of mouse Slc22a3
Formulation:	State: Aff - Purified State: Liquid. Purified antibody supplied in 1x PBS buffer with 0.09% (w/v) sodium azide and 2% sucrose. <i>Note that this product is shipped as lyophilized powder to China customers.</i>
Purification:	Immunoaffinity column
Conjugation:	Unconjugated
Storage:	Store undiluted at 2-8°C for one month or (in aliquots) at -20°C to -80°C for longer. Avoid repeated freezing and thawing.
Stability:	Shelf life: one year from despatch.
Predicted Protein Size:	Slc22a3: 61 kDa
Gene Name:	solute carrier family 22 (organic cation transporter), member 3
Database Link:	<a href="#">NP_035525</a> <a href="#">Entrez Gene 6581 Human</a> <a href="#">Entrez Gene 20519 Mouse</a> <a href="#">Q9WTW5</a>
Background:	Slc22a3 mediates potential-dependent transport of a variety of organic cations. It may play a significant role in the disposition of cationic neurotoxins and neurotransmitters in the brain.
Synonyms:	Organic cation transporter 3, EMT, EMTH



[View online »](#)

**Product images:**

Mouse Heart; WB Suggested Anti-Slc22a3 Antibody. Titration: 1.0 ug/ml. Positive Control: Mouse Heart; Slc22a3 antibody - middle region (AP46026PU-N) in Mouse Heart cells using Western Blot