

## Product datasheet for **AP43756PU-N**

### ac Rabbit Polyclonal Antibody

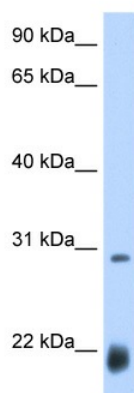
#### Product data:

Product Type:	Primary Antibodies
Applications:	WB
Recommended Dilution:	Western blotting (0.2 - 1 µg/ml)
Reactivity:	Drosophila
Host:	Rabbit
Clonality:	Polyclonal
Immunogen:	Synthetic peptide corresponding to N-term region of Fruit fly
Formulation:	State: Aff - Purified State: Liquid. Purified antibody supplied in 1x PBS buffer with 0.09% (w/v) sodium azide and 2% sucrose. <i>Note that this product is shipped as lyophilized powder to China customers.</i>
Purification:	Purified using peptide immunoaffinity column
Conjugation:	Unconjugated
Storage:	Store undiluted at 2-8°C for one month or (in aliquots) at -20°C to -80°C for longer. Avoid repeated freezing and thawing.
Stability:	Shelf life: one year from despatch.
Database Link:	<a href="#">P10083</a>
Background:	AS-C proteins are involved in the determination of the neuronal precursors in the peripheral nervous system and the central nervous system. L <sub>1</sub> SC, SC and AC strongly label the presumptive stomatogastric nervous system, while ASE is more prominent in the presumptive procephalic lobe.
Synonyms:	AC, T5, CG3796



[View online »](#)

## Product images:



Drosophila; WB Suggested Anti-ac Antibody  
Titration: 0.2-1 ug/ml. Positive Control:  
Drosophila; ac antibody - N-terminal region  
(AP43756PU-N) in Drosophila cells using Western  
Blot