

Product datasheet for **AP43589PU-N**

ALG2 Rabbit Polyclonal Antibody

Product data:

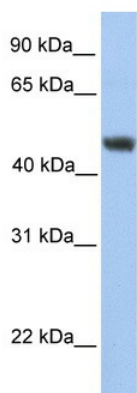
Product Type:	Primary Antibodies
Applications:	WB
Recommended Dilution:	Western blotting (0.2 - 1.0 µg/ml)
Reactivity:	Bovine, Canine, Human, Mouse, Porcine, Rat, African clawed frog
Host:	Rabbit
Clonality:	Polyclonal
Immunogen:	Synthetic peptide directed towards the C terminal of human ALG2
Formulation:	State: Aff - Purified State: Liquid. Purified antibody supplied in 1x PBS buffer with 0.09% (w/v) sodium azide and 2% sucrose. <i>Note that this product is shipped as lyophilized powder to China customers.</i>
Purification:	Purified using peptide immunoaffinity column
Conjugation:	Unconjugated
Storage:	Store undiluted at 2-8°C for one month or (in aliquots) at -20°C to -80°C for longer. Avoid repeated freezing and thawing.
Stability:	Shelf life: one year from despatch.
Gene Name:	ALG2, alpha-1,3/1,6-mannosyltransferase
Database Link:	Entrez Gene 56737 Mouse Entrez Gene 313231 Rat Entrez Gene 85365 Human Q9H553
Background:	ALG2 is a member of the glycosyltransferase 1 family. It acts as an alpha 1,3 mannosyltransferase, mannosylating Man(2)GlcNAc(2)-dolichol diphosphate and Man(1)GlcNAc(2)-dolichol diphosphate to form Man(3)GlcNAc(2)-dolichol diphosphate. Defects in this gene have been associated with congenital disorder of glycosylation type 1h (CDG-1h). This gene encodes a member of the glycosyltransferase 1 family. The encoded protein acts as an alpha 1,3 mannosyltransferase, mannosylating Man(2)GlcNAc(2)-dolichol diphosphate and Man(1)GlcNAc(2)-dolichol diphosphate to form Man(3)GlcNAc(2)-dolichol diphosphate. Defects in this gene have been associated with congenital disorder of glycosylation type 1h (CDG-1h).
Synonyms:	CDG1h; FLJ14511; hALPG2; NET38



[View online »](#)

Protein Pathways: Metabolic pathways, N-Glycan biosynthesis

Product images:



Human HepG2; WB Suggested Anti-ALG2
Antibody Titration: 0.2-1 ug/ml. Positive Control:
HepG2 cell lysate; ALG2 antibody - C-terminal
region (AP43589PU-N) in Human HepG2 cells
using Western Blot