

Product datasheet for **AP43261PU-N**

Angiomotin like 1 (AMOTL1) Rabbit Polyclonal Antibody

Product data:

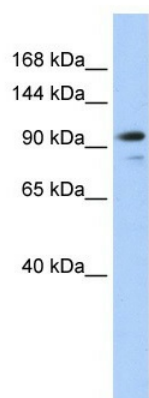
Product Type:	Primary Antibodies
Applications:	WB
Recommended Dilution:	Western blotting (0.2 - 1.0 µg/ml)
Reactivity:	Bovine, Canine, Human, Mouse
Host:	Rabbit
Clonality:	Polyclonal
Immunogen:	Synthetic peptide directed towards the N terminal of human AMOTL1
Formulation:	State: Aff - Purified State: Liquid. Purified antibody supplied in 1x PBS buffer with 0.09% (w/v) sodium azide and 2% sucrose. <i>Note that this product is shipped as lyophilized powder to China customers.</i>
Purification:	Purified using peptide immunoaffinity column
Conjugation:	Unconjugated
Storage:	Store undiluted at 2-8°C for one month or (in aliquots) at -20°C to -80°C for longer. Avoid repeated freezing and thawing.
Stability:	Shelf life: one year from despatch.
Gene Name:	angiomotin like 1
Database Link:	Entrez Gene 75723 Mouse Entrez Gene 154810 Human Q8IY63
Background:	AMOTL1 is a peripheral membrane protein that is a component of tight junctions or TJs. TJs form an apical junctional structure and act to control paracellular permeability and maintain cell polarity. This protein is related to angiomotin, an angiostatin binding protein that regulates endothelial cell migration and capillary formation. The protein encoded by this gene is a peripheral membrane protein that is a component of tight junctions or TJs. TJs form an apical junctional structure and act to control paracellular permeability and maintain cell polarity. This protein is related to angiomotin, an angiostatin binding protein that regulates endothelial cell migration and capillary formation.
Synonyms:	JEAP



[View online »](#)

Protein Pathways: Tight junction

Product images:



Human 293T; WB Suggested Anti-AMOTL1 Antibody Titration: 0.2-1 ug/ml. ELISA Titer: 1:312500. Positive Control: 293T cell lysate; AMOTL1 antibody - N-terminal region (AP43261PU-N) in Human 293T cells using Western Blot