

Product datasheet for **AP42287PU-N**

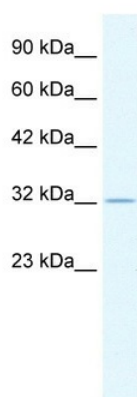
Tristetraprolin (ZFP36) Rabbit Polyclonal Antibody

Product data:

Product Type:	Primary Antibodies
Applications:	WB
Recommended Dilution:	Western blotting (0.2 - 1 µg/ml)
Reactivity:	Bovine, Canine, Chicken, Human, Mouse, Porcine, Rat, Zebrafish, African clawed frog
Host:	Rabbit
Clonality:	Polyclonal
Immunogen:	The immunogen for anti-ZFP36 antibody: synthetic peptide directed towards the N terminal of human ZFP36
Formulation:	State: Aff - Purified State: Liquid. Purified antibody supplied in 1x PBS buffer with 0.09% (w/v) sodium azide and 2% sucrose. <i>Note that this product is shipped as lyophilized powder to China customers.</i>
Purification:	Purified using peptide immunoaffinity column
Conjugation:	Unconjugated
Storage:	Store undiluted at 2-8°C for one month or (in aliquots) at -20°C to -80°C for longer. Avoid repeated freezing and thawing.
Stability:	Shelf life: one year from despatch.
Gene Name:	ZFP36 ring finger protein
Database Link:	Entrez Gene 7538 Human P26651
Background:	TTP or ZFP36 is a mRNA-binding protein involved in post-transcriptional regulation of AU-rich element (ARE)-containing mRNAs. It acts by specifically binding ARE-containing mRNAs and promoting their degradation and plays a key role in the post-transcriptional regulation of tumor necrosis factor (TNF).
Synonyms:	ZFP36, Zfp-36, G0S24, RNF162A, TIS11A, TIS11, TTP



[View online »](#)

Product images:

Human HepG2; WB Suggested Anti-ZFP36 Antibody Titration: 0.2-1 ug/ml. ELISA Titer: 1:62500. Positive Control: HepG2 cell lysate; ZFP36 antibody - N-terminal region (AP42287PU-N) in Human HepG2 cells using Western Blot