

Product datasheet for **AP42254PU-N**

RGS20 (isoform 6 specific) Rabbit Polyclonal Antibody

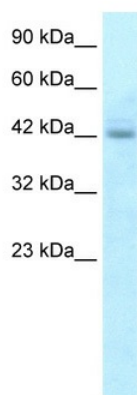
Product data:

Product Type:	Primary Antibodies
Applications:	WB
Recommended Dilution:	Western blotting (4 - 8 µg/ml)
Reactivity:	Human
Host:	Rabbit
Clonality:	Polyclonal
Immunogen:	The immunogen for anti-RGS20 antibody: synthetic peptide directed towards the N terminal of human RGS20
Specificity:	This antibody will detect only isoform 6 what was chosen as the canonical sequence for this protein. The immunogenic sequence is not present on isoforms 1-5.
Formulation:	State: Aff - Purified State: Liquid. Purified antibody supplied in 1x PBS buffer with 0.09% (w/v) sodium azide and 2% sucrose. <i>Note that this product is shipped as lyophilized powder to China customers.</i>
Purification:	Purified using Protein A affinity column
Conjugation:	Unconjugated
Storage:	Store undiluted at 2-8°C for one month or (in aliquots) at -20°C to -80°C for longer. Avoid repeated freezing and thawing.
Stability:	Shelf life: one year from despatch.
Gene Name:	regulator of G-protein signaling 20
Database Link:	Entrez Gene 8601 Human O76081
Background:	Regulator of G protein signaling (RGS) proteins are regulatory and structural components of G protein-coupled receptor complexes. RGS proteins are GTPase-activating proteins for Gi and Gq class G-alpha proteins. They accelerate transit through the cycle of GTP binding and hydrolysis and thereby accelerate signaling kinetics and termination.
Synonyms:	RGSZ1, ZGAP1, Gz-GAP
Protein Families:	Druggable Genome



[View online »](#)

Product images:



Human HepG2; WB Suggested Anti-RGS20
Antibody Titration: 5.0ug/ml. Positive Control:
HepG2 cell lysate; RGS20 antibody - N-terminal
region (AP42254PU-N) in Human HepG2 cells
using Western Blot