

Product datasheet for **AP42249PU-N**

KIF25 Rabbit Polyclonal Antibody

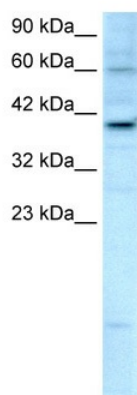
Product data:

Product Type:	Primary Antibodies
Applications:	IHC, WB
Recommended Dilution:	Western blotting (2-4 µg/ml). Immunohistochemistry on Paraffin Embedded Sections (4-8 µg/ml).
Reactivity:	Canine, Human
Host:	Rabbit
Clonality:	Polyclonal
Immunogen:	Synthetic peptide directed towards the C terminal of human KIF25
Formulation:	State: Aff - Purified State: Liquid. Purified antibody supplied in 1x PBS buffer with 0.09% (w/v) sodium azide and 2% sucrose. <i>Note that this product is shipped as lyophilized powder to China customers.</i>
Purification:	Purified using Protein A affinity column
Conjugation:	Unconjugated
Storage:	Store undiluted at 2-8°C for one month or (in aliquots) at -20°C to -80°C for longer. Avoid repeated freezing and thawing.
Stability:	Shelf life: one year from despatch.
Gene Name:	kinesin family member 25
Database Link:	Entrez Gene 3834 Human Q9UIL4
Background:	The protein encoded by the KIF25 gene is a member of the kinesin-like protein family. Protein family members are microtubule-dependent molecular motors that transport organelles within cells and move chromosomes during cell division. However, the particular function of this gene product has not yet been determined. Two alternatively spliced transcript variants which encode products have been described. Other splice variants have been found that lack exon 2 and the initiation codon for translation.
Synonyms:	KNSL3, Kinesin-like protein 3
Protein Families:	Druggable Genome

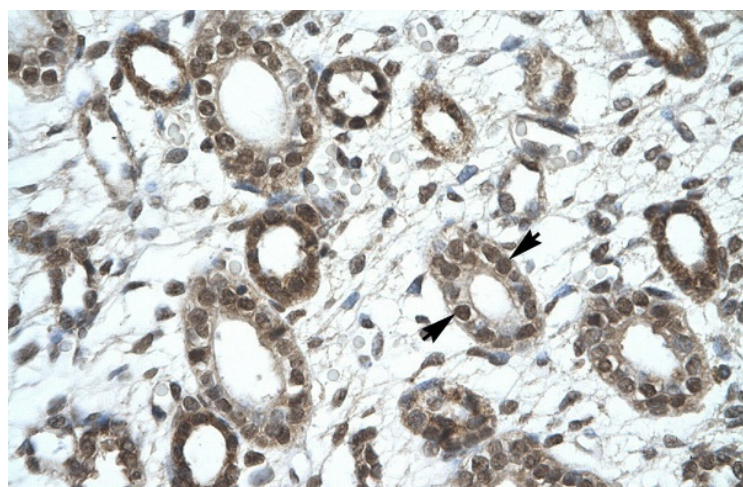


[View online »](#)

Product images:



Human HepG2; WB Suggested Anti-KIF25 Antibody Titration: 2.5ug/ml. Positive Control: HepG2 cell lysate; KIF25 antibody - C-terminal region (AP42249PU-N) in Human HepG2 cells using Western Blot



Human kidney; KIF25 antibody - C-terminal region (AP42249PU-N) in Human kidney cells using Immunohistochemistry