

Product datasheet for **AP42244PU-N**

KIF3B Rabbit Polyclonal Antibody

Product data:

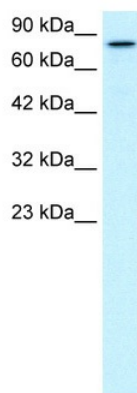
Product Type:	Primary Antibodies
Applications:	WB
Recommended Dilution:	Western blotting (0.2 - 1 µg/ml)
Reactivity:	Canine, Chicken, Human, Mouse, Rat
Host:	Rabbit
Clonality:	Polyclonal
Immunogen:	The immunogen for anti-KIF3B antibody: synthetic peptide directed towards the C terminal of human KIF3B
Formulation:	State: Aff - Purified State: Liquid. Purified antibody supplied in 1x PBS buffer with 0.09% (w/v) sodium azide and 2% sucrose. <i>Note that this product is shipped as lyophilized powder to China customers.</i>
Purification:	Purified using peptide immunoaffinity column
Conjugation:	Unconjugated
Storage:	Store undiluted at 2-8°C for one month or (in aliquots) at -20°C to -80°C for longer. Avoid repeated freezing and thawing.
Stability:	Shelf life: one year from despatch.
Gene Name:	kinesin family member 3B
Database Link:	Entrez Gene 9371 Human O15066
Background:	The protein encoded by the KIF3B gene acts as a heterodimer with kinesin family member 3A to aid in chromosome movement during mitosis and meiosis. The encoded protein is a plus end-directed microtubule motor and can interact with the SMC3 subunit of the cohesin complex. In addition, the encoded protein may be involved in the intracellular movement of membranous organelles. This protein and kinesin family member 3A form the kinesin II subfamily of the kinesin superfamily.
Synonyms:	KIF3B, KIAA0359, Kinesin-like protein KIF3B, Microtubule plus end-directed kinesin motor 3B, HH0048



[View online »](#)

Protein Families: Druggable Genome

Product images:



Human HepG2; WB Suggested Anti-KIF3B
Antibody Titration: 0.2-1 ug/ml. Positive Control:
HepG2 cell lysate; KIF3B antibody - C-terminal
region (AP42244PU-N) in Human HepG2 cells
using Western Blot