

Product datasheet for **AP42098PU-N**

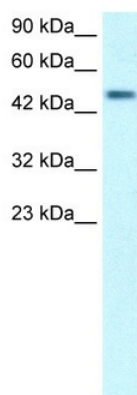
CREBRF Rabbit Polyclonal Antibody

Product data:

Product Type:	Primary Antibodies
Applications:	WB
Recommended Dilution:	Western blotting (0.2 - 1 µg/ml)
Reactivity:	Bovine, Canine, Human, Mouse, Rat
Host:	Rabbit
Isotype:	IgG
Clonality:	Polyclonal
Immunogen:	The immunogen for anti-CREB3RF antibody: synthetic peptide directed towards the middle region of human CREB3RF.
Formulation:	State: Aff - Purified State: Liquid. Purified antibody supplied in 1x PBS buffer with 0.09% (w/v) sodium azide and 2% sucrose. <i>Note that this product is shipped as lyophilized powder to China customers.</i>
Purification:	Purified on peptide immunoaffinity column
Conjugation:	Unconjugated
Storage:	Store undiluted at 2-8°C for one month or (in aliquots) at -20°C to -80°C for longer. Avoid repeated freezing and thawing.
Stability:	Shelf life: one year from despatch.
Gene Name:	CREB3 regulatory factor
Database Link:	Entrez Gene 153222 Human Q8IUR6
Background:	CREB3RF acts as a negative regulator of the endoplasmic reticulum stress response or unfolded protein response (UPR). It represses the transcriptional activity of CREB3 during the UPR and recruits CREB3 into nuclear foci.
Synonyms:	CREB3 regulatory factor, C5orf41, LRF
Protein Families:	Transcription Factors



[View online »](#)

Product images:

Human Lung; WB Suggested Anti-C5orf41
Antibody Titration: 0.2-1 ug/ml. Positive Control:
Human Lung; C5orf41 antibody - middle region
(AP42098PU-N) in Human Lung cells using
Western Blot