

Product datasheet for **AP42079PU-N**

NAB1 Rabbit Polyclonal Antibody

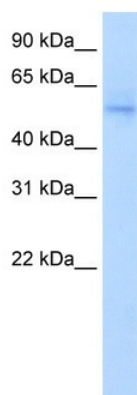
Product data:

Product Type:	Primary Antibodies
Applications:	IHC, WB
Recommended Dilution:	Western blotting (0.2 - 1 µg/ml) Immunohistochemistry on paraffin embedded sections (5 - 15 µg/ml)
Reactivity:	Bovine, Canine, Chicken, Human, Mouse, Rat, Zebrafish, African clawed frog
Host:	Rabbit
Clonality:	Polyclonal
Immunogen:	The immunogen for anti-NAB1 antibody: synthetic peptide directed towards the N terminal of human NAB1.
Formulation:	State: Aff - Purified State: Liquid. Purified antibody supplied in 1x PBS buffer with 0.09% (w/v) sodium azide and 2% sucrose. <i>Note that this product is shipped as lyophilized powder to China customers.</i>
Purification:	Purified on peptide immunoaffinity column
Conjugation:	Unconjugated
Storage:	Store undiluted at 2-8°C for one month or (in aliquots) at -20°C to -80°C for longer. Avoid repeated freezing and thawing.
Stability:	Shelf life: one year from despatch.
Gene Name:	NGFI-A binding protein 1
Database Link:	Entrez Gene 4664 Human Q13506
Background:	NAB1 belongs to the NAB family and acts as a transcriptional repressor for zinc finger transcription factors EGR1 and EGR2.
Synonyms:	NGFI-A-binding protein 1
Protein Families:	Transcription Factors

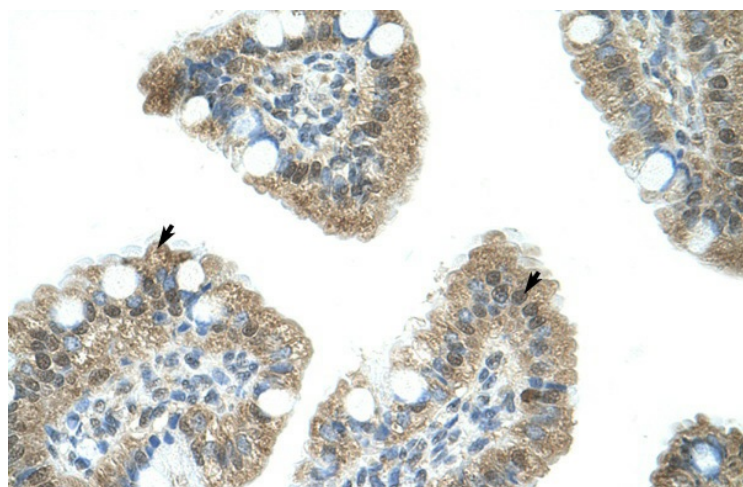


[View online »](#)

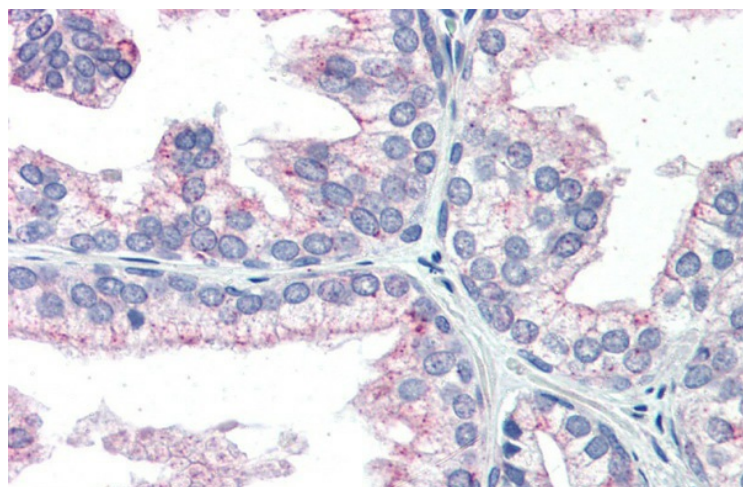
Product images:



r-NAB1; WB Suggested Anti-NAB1 Antibody Titration: 0.2-1 ug/ml. Positive Control: Transfected 293T; NAB1 antibody - N-terminal region (AP42079PU-N) in r-NAB1 cells using Western Blot



Human Intestine; NAB1 antibody - N-terminal region (AP42079PU-N) in Human Intestine cells using Immunohistochemistry



Human Prostate; Immunohistochemistry with Human Prostate lysate tissue at an antibody concentration of 5.0ug/ml using anti-NAB1 antibody (AP42079PU-N); NAB1 antibody - N-terminal region (AP42079PU-N) in Human Prostate cells using Immunohistochemistry