

## Product datasheet for **AP39032PU-N**

### SLC36A1 (1-30) Rabbit Polyclonal Antibody

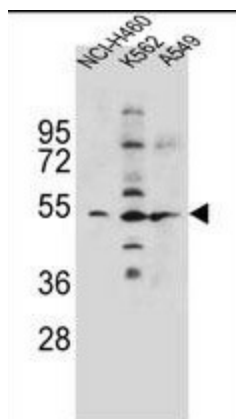
#### Product data:

|                       |  |
|-----------------------|--|
| Product Type:         | Primary Antibodies   |
| Applications:         | FC, IF, IHC, WB  |
| Recommended Dilution: | <b>Flow Cytometry:</b> 1/10 - 1/50.<br><b>Immunofluorescence:</b> 1/10 - 1/50.<br><b>Immunohistochemistry on Paraffin Sections:</b> 5 µg/ml.<br><b>Western Blot:</b> 1/1000. |
| Reactivity:           | Human  |
| Host:                 | Rabbit   |
| Isotype:              | IgG  |
| Clonality:            | Polyclonal   |
| Immunogen:            | KLH-conjugated synthetic peptide from human SLC36A1, N-terminal epitope (aa 1-30)  |
| Specificity:          | The antibody detects human SLC36A1.<br>Other species not tested.   |
| Formulation:          | PBS, containing 0.09% sodium azide<br>State: Aff - Purified<br>State: Liquid Ig fraction   |
| Purification:         | Immunoaffinity Chromatography  |
| Conjugation:          | Unconjugated   |
| Storage:              | Store the antibody undiluted at 2-8°C for one month or (in aliquots) at -20°C for longer.<br>Avoid repeated freezing and thawing.  |
| Stability:            | Shelf life: one year from despatch.  |
| Gene Name:            | solute carrier family 36 member 1  |
| Database Link:        | <a href="#">Entrez Gene 206358 Human Q7Z2H8</a>  |
| Background:           | Proton-coupled amino acid transporter 1 has transport activity for small amino acids.  |
| Synonyms:             | hPAT1; LYAAT-1; LYAAT1; PAT1; TRAMD3   |

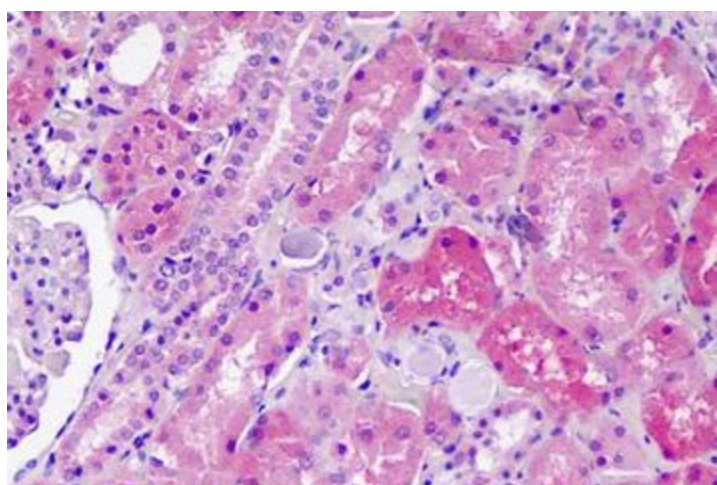


[View online »](#)

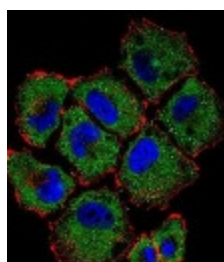
## Product images:



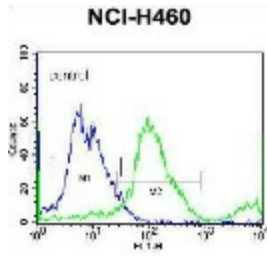
Western blot detection of SLC36A1 protein (indicated by arrow) in NCI-H460, K562, and A549 cell line lysates (35 ug/lane), using anti-SLC36A1 / PAT1 antibody cat- no. AP39032PU-N.



Immunohistochemical staining of Formalin-Fixed, Paraffin-Embedded human Kidney using anti-SLC36A1 antibody cat. no. AP39032PU-N



Confocal immunofluorescence using anti-SLC36A1 antibody cat. no. AP39032PU-N on NCI-H460 cells, followed by Alexa Fluor 488-conjugated goat anti-rabbit IgG (green). Actin filaments have been labeled with Alexa Fluor 555 phalloidin (red). DAPI was used to stain the cell nuclear (blue).



Flow cytometry of NCI-H460 cells (right histogram) compared to a negative control cell (left histogram) using anti-SLC36A1 antibody cat. no. AP39032PU-N. FITC-conjugated donkey-anti-rabbit secondary antibodies were used for the analysis.