

Product datasheet for **AP39027PU-N**

DAB1 Rabbit Polyclonal Antibody

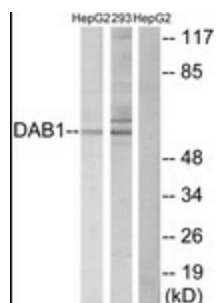
Product data:

Product Type:	Primary Antibodies
Applications:	ELISA, IF, IHC, WB
Recommended Dilution:	ELISA: 1/20000. Immunofluorescence: 1/100 - 1/500. Immunohistochemistry on Paraffin Sections: 1/50. Western Blot: 1/500 - 1/1000.
Reactivity:	Human, Mouse, Rat
Host:	Rabbit
Isotype:	IgG
Clonality:	Polyclonal
Immunogen:	Synthetic peptide from human Dab1 (aa199-248)
Specificity:	The antibody detects endogenous levels of total Dab1 protein.
Formulation:	PBS (without Mg ²⁺ , Ca ²⁺), pH 7.4, 150 mM sodium chloride, 50% glycerol State: Aff - Purified State: Liquid Ig fraction Preservative: 0.02% sodium azide
Concentration:	lot specific
Purification:	Immunoaffinity Chromatography
Conjugation:	Unconjugated
Storage:	Store the antibody undiluted at 2-8°C for one month or (in aliquots) at -20°C for longer. Avoid repeated freezing and thawing.
Stability:	Shelf life: one year from despatch.
Gene Name:	DAB1, reelin adaptor protein
Database Link:	Entrez Gene 1600 Human O75553
Background:	Disabled homolog 1 is an adapter molecule in neurogenesis.
Synonyms:	Disabled homolog 1

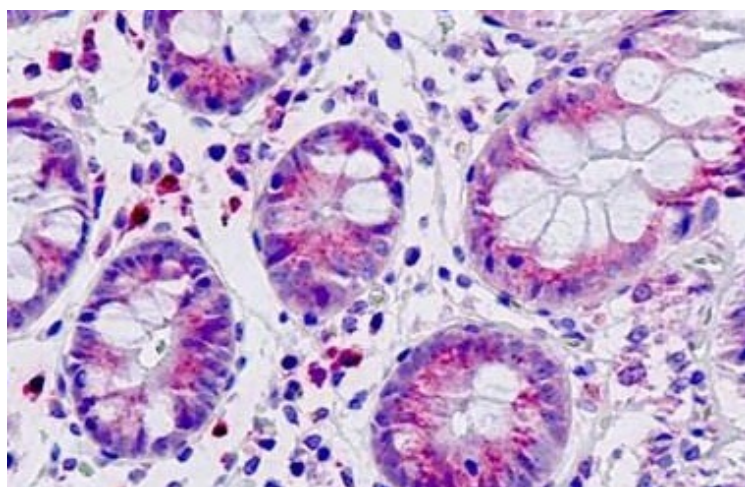


[View online »](#)

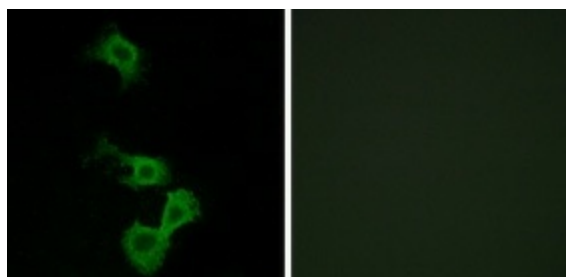
Product images:



Anti-Dab1 antibody no. used in Western blot of extracts from HepG2 (left lane) and 293 cells (middle lane). Right lane: HepG2 cells treated with the synthesized peptide.



Immunohistochemical staining of Formalin-fixed, Paraffin-embedded human intestine using anti-Dab1 antibody no.



Immunofluorescence of MCF7 cells, using anti-Dab1 antibody no. Cells on the right are treated with the synthesized peptide.