

Product datasheet for **AP33516PU-N**

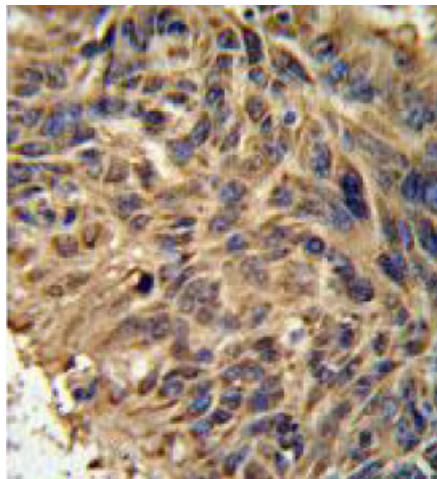
FBXL2 (C-term) Rabbit Polyclonal Antibody

Product data:

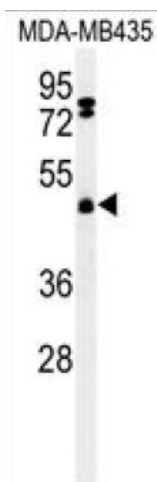
Product Type:	Primary Antibodies
Applications:	ELISA, FC, IHC, WB
Recommended Dilution:	ELISA: 1/1,000. Western blotting: 1/1,000. Flow Cytometry: 1/10-1/50. Immunohistochemistry on Paraffin Sections: 1/50-1/100.
Reactivity:	Human, Mouse
Host:	Rabbit
Isotype:	Ig
Clonality:	Polyclonal
Immunogen:	KLH conjugated synthetic peptide between 366-395 amino acids from the C-terminal region of Human FBXL2.
Specificity:	This antibody recognizes FBXL2 (C-term).
Formulation:	PBS State: Aff - Purified State: Liquid purified IgG fraction Preservative: 0.09% (W/V) Sodium Azide
Concentration:	lot specific
Purification:	Protein A column, followed by peptide affinity purification
Conjugation:	Unconjugated
Storage:	Store undiluted at 2-8°C for one month or (in aliquots) at -20°C for longer. Avoid repeated freezing and thawing.
Stability:	Shelf life: one year from despatch.
Gene Name:	F-box and leucine-rich repeat protein 2
Database Link:	Entrez Gene 25827 Human Q9UKC9
Synonyms:	DKFZp564P0622; FBL2; FBL3



[View online »](#)

Product images:

Formalin fixed and paraffin embedded human lung carcinomastained with FBXL2 Antibody (C-term) (Cat.-No AP33516PU-N), followed by peroxidase conjugation of the secondary antibody and DAB staining. This data demonstrates the use of the FBXL2 Antibody (C-term) for immunohistochemistry. Clinical relevance has not been evaluated.



Western blot analysis of FBXL2 Antibody (C-term) (Cat.-No AP33516PU-N) in MDA-MB435 cell line lysates (35ug/lane). FBXL2 (arrow) was detected using the purified Pab.