

Product datasheet for **AP33507PU-S**

Glypican 4 (GPC4) Mouse Monoclonal Antibody [Clone ID: AT51E3]

Product data:

Product Type:	Primary Antibodies
Clone Name:	AT51E3
Applications:	ELISA, FC, IF, WB
Recommended Dilution:	ELISA. Western blot (1/1000). Flow Cytometry (1/200). Immunofluorescence (1/200).
Reactivity:	Human
Host:	Mouse
Isotype:	IgG2a
Clonality:	Monoclonal
Immunogen:	Recombinant Human GPC4 (401-529 aa) purified from <i>E. coli</i> .
Specificity:	The antibody recognizes Human GPC4. Other species not tested.
Formulation:	PBS, pH 7.4 containing 0.02% Sodium Azide and 10% Glycerol State: Purified State: Liquid purified Ig fraction
Concentration:	lot specific
Purification:	Affinity Chromatography on Protein G
Conjugation:	Unconjugated
Storage:	Store undiluted at 2-8°C for up to two weeks or (in aliquots) at -20°C for longer. Avoid repeated freezing and thawing.
Stability:	Shelf life: one year from despatch.
Gene Name:	glypican 4
Database Link:	Entrez Gene 2239 Human O75487



[View online »](#)

Background:

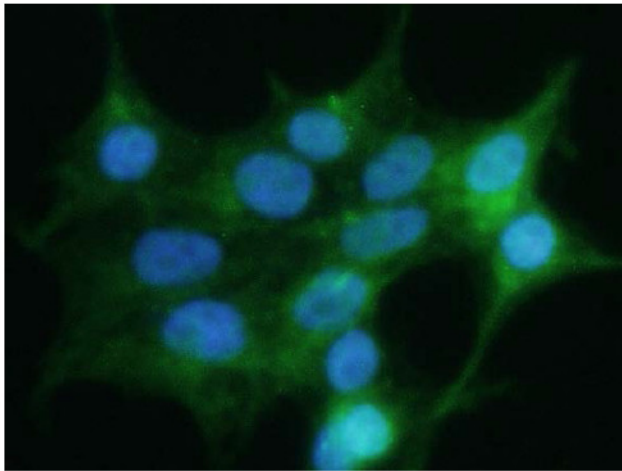
The glypican (Gpc) family of cell surface heparan sulfate proteoglycans is expressed in a tissue specific and developmentally regulated fashion. Expression of glypican 4 has been reported in the mouse brain at embryonic day 10 and later stages and low during early tubule formation but is up-regulated in mature tubules. Accordingly it is not detected in the midline of the embryo at the stage of initiation of neural tube closure, suggesting that glypican-4 is unlikely to play an essential role in convergent extension in the mouse.

Synonyms:

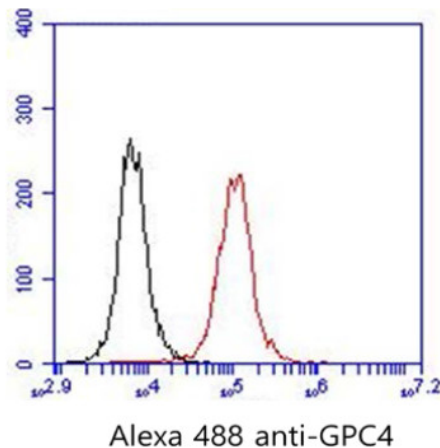
Glypican 4, K-glypican

Protein Families:

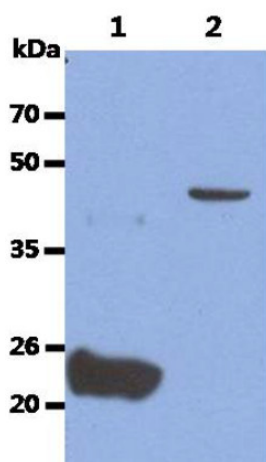
Druggable Genome

Product images:

ICC/IF analysis of GPC4 in 293T cells line, stained with DAPI (Blue) for nucleus staining and monoclonal anti-human GPC4 antibody (1/200) with goat anti-mouse IgG-Alexa fluor 488 conjugate (Green).



Flow cytometry analysis of GPC4 in 293T cell line, staining at 2-5 µg for 1x10⁶ cells (red line). The secondary antibody used goat anti-mouse IgG Alexa fluor 488 conjugate. Isotype control antibody was mouse IgG (black line).



The Recombinant Human GPC4 (50ng) and Cell lysate (40 μ g) were resolved by SDS-PAGE, transferred to PVDF membrane and probed with anti-human GPC4 antibody (1/1000). Proteins were visualized using a goat anti-mouse secondary antibody conjugated to HRP and an ECL detection system.

Lane 1. Recombinant Human GPC4

Lane 2. Ramos cell lysate