

Product datasheet for **AP33505PU-N**

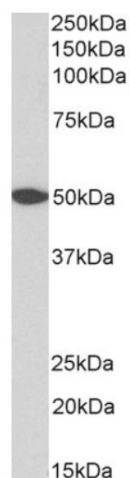
GPR39 (377-391) Goat Polyclonal Antibody

Product data:

Product Type:	Primary Antibodies
Applications:	ELISA, WB
Recommended Dilution:	Peptide ELISA: 1/64000 (Detection Limit). Western blot: 0.3-1 µg/ml. Approx 48kDa band observed in lysates of cell line A431 and 50kDa in Human Brain lysates (calculated MW of 51.3kDa according to NP_001499.1).
Reactivity:	Human
Host:	Goat
Clonality:	Polyclonal
Immunogen:	Peptide with sequence from the internal region of the protein sequence according to NP_001499.1.
Specificity:	This antibody detects Human GPR39 (aa377-391). Other species not tested.
Formulation:	Tris saline, 0.02% Sodium Azide, pH~7.3 with 0.5% BSA State: Aff - Purified State: Liquid purified Ig fraction
Concentration:	lot specific
Purification:	Ammonium sulphate precipitation followed by antigen affinity chromatography using the immunizing peptide
Conjugation:	Unconjugated
Storage:	Store undiluted at 2-8°C for one month or (in aliquots) at -20°C for longer. Avoid repeated freezing and thawing.
Stability:	Shelf life: one year from despatch.
Gene Name:	G protein-coupled receptor 39
Database Link:	Entrez Gene 2863 Human O43194
Synonyms:	G-protein coupled receptor 39



[View online »](#)

Product images:

(0.3ug/ml) staining of A431 (A) and Human Cerebellum (B) lysates (35ug protein in RIPA buffer). Primary incubation was 1 hour. Detected by chemiluminescence.