

Product datasheet for **AP33504PU-N**

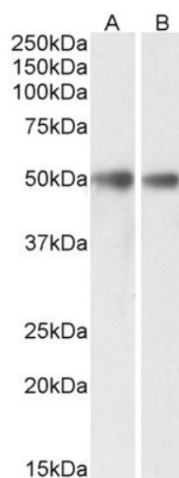
MIR16 (GDE1) (230-242) Goat Polyclonal Antibody

Product data:

| | |
|-----------------------|---|
| Product Type: | Primary Antibodies |
| Applications: | ELISA, WB |
| Recommended Dilution: | Peptide ELISA: 1/128000 (Detection Limit). Western blot: 0.3-1 µg/ml. Approx 50kDa band observed in Mouse and Rat Brain lysates (calculated MW of 37.7kDa according to NP_057725.1). The observed molecular weight corresponds to the glycosylated form. |
| Reactivity: | Canine, Human, Mouse, Rat |
| Host: | Goat |
| Clonality: | Polyclonal |
| Immunogen: | Peptide with sequence from the internal region of the protein sequence according to NP_057725.1. |
| Specificity: | This antibody detects GDE1 / MIR16 (aa230-242). |
| Formulation: | Tris saline, 0.02% Sodium Azide, pH~7.3 with 0.5% BSA State: Aff - Purified State: Liquid purified Ig fraction |
| Concentration: | lot specific |
| Purification: | Ammonium sulphate precipitation followed by antigen affinity chromatography using the immunizing peptide |
| Conjugation: | Unconjugated |
| Storage: | Store undiluted at 2-8°C for one month or (in aliquots) at -20°C for longer. Avoid repeated freezing and thawing. |
| Stability: | Shelf life: one year from despatch. |
| Gene Name: | glycerophosphodiester phosphodiesterase 1 |
| Database Link: | Entrez Gene 51573 Human Q9NZC3 |
| Synonyms: | Glycerophosphodiester phosphodiesterase 1, MIR16 |



[View online »](#)

Product images:

(0.3ug/ml) staining of Mouse (A) and Rat (B) Brain lysates (35ug protein in RIPA buffer). Primary incubation was 1 hour. Detected by chemiluminescence.