

Product datasheet for **AP33502PU-N**

PRMT2 Goat Polyclonal Antibody

Product data:

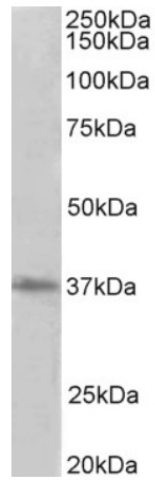
Product Type:	Primary Antibodies
Applications:	WB
Recommended Dilution:	Peptide ELISA: 1/64000 (Detection Limit). Western blot: 1-3 µg/ml. Approx 37kDa band observed in lysates of cell line HeLa and in rodent Brain lysates (calculated MW of 37.2kDa according to NP_001229793.1). Approx 35kDa band observed in Pig Brain lysates (calculated MW of 38.7kDa according to XP_005658963.1).
Reactivity:	Bovine, Human, Mouse, Porcine, Rat
Host:	Goat
Clonality:	Polyclonal
Immunogen:	Peptide with sequence C-DQPRTTYHVSILQ, from the internal region of the protein sequence according to NP_001526.2; NP_001229793.1; NP_001229794.1; NP_001229795.1.
Specificity:	This antibody is expected to recognize all reported isoforms (NP_001526.2; NP_001229793.1; NP_001229794.1; NP_001229795.1). Reported variants represent identical protein: NP_001526.2, NP_996845.1.
Formulation:	Tris saline, pH~7.3 State: Aff - Purified State: Liquid purified Ig fraction Stabilizer: 0.5% BSA Preservative: 0.02% Sodium Azide
Concentration:	lot specific
Purification:	Ammonium Sulphate Precipitation followed by antigen Affinity Chromatography using the immunizing peptide
Conjugation:	Unconjugated
Storage:	Store undiluted at 2-8°C for one month or (in aliquots) at -20°C for longer. Avoid repeated freezing and thawing.
Stability:	Shelf life: one year from despatch.
Gene Name:	protein arginine methyltransferase 2
Database Link:	Entrez Gene 3275 Human P55345



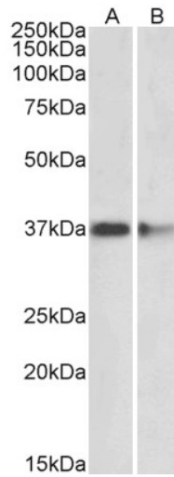
[View online »](#)

Synonyms: HMT1, HRMT1L1

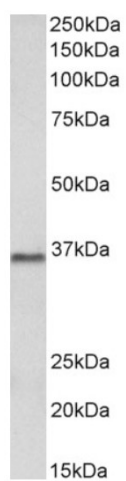
Product images:



(2ug/ml) staining of HeLa lysate (35ug protein in RIPA buffer). Primary incubation was 1 hour. Detected by chemiluminescence.



(2ug/ml) staining of Mouse (A) and Rat (B) Brain lysates (35ug protein in RIPA buffer). Primary incubation was 1 hour. Detected by chemiluminescence.



(2ug/ml) staining of Pig Brain lysate (35ug protein in RIPA buffer). Primary incubation was 1 hour. Detected by chemiluminescence.