

## Product datasheet for **AP33497PU-N**

### EGFL7 Goat Polyclonal Antibody

#### Product data:

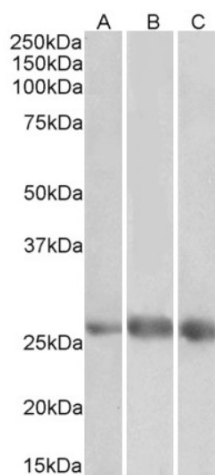
Product Type:	Primary Antibodies
Applications:	WB
Recommended Dilution:	<b>Peptide ELISA:</b> 1/128000 (Detection Limit). <b>Western blot:</b> 1-3 µg/ml. Approx 26-27kDa band observed in Human Heart, Kidney and Lung lysates (calculated MW of 29.6kDa according to NP_057299.1). The observed molecular weight corresponds to the mature form (calc. MW 27.1kDa without its 23aa signal peptide).
Reactivity:	Human
Host:	Goat
Clonality:	Polyclonal
Immunogen:	Peptide with sequence C-HGDPVSESFVQR, from the internal region of the protein sequence according to NP_057299.1.
Specificity:	This antibody recognizes Human EGFL7. Other species not tested.
Formulation:	Tris saline, pH~7.3 State: Aff - Purified State: Liquid purified Ig fraction Stabilizer: 0.5% BSA Preservative: 0.02% Sodium Azide
Concentration:	lot specific
Purification:	Ammonium Sulphate Precipitation followed by antigen Affinity Chromatography using the immunizing peptide
Conjugation:	Unconjugated
Storage:	Store undiluted at 2-8°C for one month or (in aliquots) at -20°C for longer. Avoid repeated freezing and thawing.
Stability:	Shelf life: one year from despatch.
Gene Name:	EGF like domain multiple 7
Database Link:	<a href="#">Entrez Gene 51162 Human Q9UHF1</a>



[View online »](#)

**Synonyms:** EGF-like protein 7, EGF like protein 7, VE-statin, NOTCH4-like protein, Zneu1, MEGF7, UNQ187, PRO1449

**Product images:**



(1ug/ml) staining of Heart (A), Kidney (B) and Lung (C) lysates (35ug protein in RIPA buffer). Primary incubation was 1 hour. Detected by chemiluminescence.