

## Product datasheet for **AP33496PU-N**

### EPHX2 (238-251) Goat Polyclonal Antibody

#### Product data:

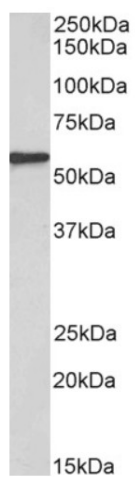
Product Type:	Primary Antibodies
Applications:	WB
Recommended Dilution:	<b>Peptide ELISA:</b> 1/128000 (Detection Limit). <b>Western blot:</b> 0.3-1 µg/ml. Approx 57kDa band observed in Human Kidney lysates (calculated MW of 57.1kDa according to NP_001243411.1).
Reactivity:	Human
Host:	Goat
Clonality:	Polyclonal
Immunogen:	Peptide with sequence C-SHGYVTVKPRVRLH, from the internal region of the protein sequence according to NP_001970.2; NP_001243411.1; NP_001243412.1..
Specificity:	This antibody is expected to recognize all reported isoforms (NP_001970.2; NP_001243411.1; NP_001243412.1). Reported variants represent identical protein: NP_001243413.1, NP_001243411.1.
Formulation:	Tris saline, pH~7.3 State: Aff - Purified State: Liquid purified Ig fraction Stabilizer: 0.5% BSA Preservative: 0.02% Sodium Azide
Concentration:	lot specific
Purification:	Ammonium Sulphate Precipitation followed by antigen Affinity Chromatography using the immunizing peptide
Conjugation:	Unconjugated
Storage:	Store undiluted at 2-8°C for one month or (in aliquots) at -20°C for longer. Avoid repeated freezing and thawing.
Stability:	Shelf life: one year from despatch.
Gene Name:	epoxide hydrolase 2
Database Link:	<a href="#">Entrez Gene 2053 Human P34913</a>



[View online »](#)

Synonyms: Soluble epoxide hydrolase, Epoxide hydratase, Cytosolic epoxide hydrolase, SEH, CEH

### Product images:



(0.3 ug/ml) staining of Human Kidney lysate (35ug protein in RIPA buffer). Primary incubation was 1 hour. Detected by chemiluminescence.