

Product datasheet for **AP33495PU-N**

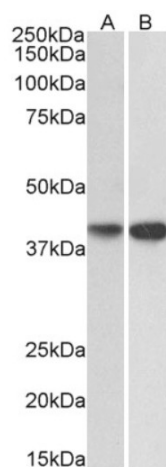
ENDOGL1 (EXOG) (C-term) Goat Polyclonal Antibody

Product data:

Product Type:	Primary Antibodies
Applications:	WB
Recommended Dilution:	Peptide ELISA: 1/128000 (Detection Limit). Western blot: 0.1-0.3 µg/ml. Approx 40kDa band observed in lysates of cell lines HepG2 and Jurkat (calculated MW of 41.1kDa according to NP_005098.2).
Reactivity:	Human
Host:	Goat
Clonality:	Polyclonal
Immunogen:	Peptide with sequence C-KAKEQSGTQIRKP, from the C Terminus of the protein sequence according to NP_005098.2; NP_001138936.1.
Specificity:	This antibody is expected to recognize both reported isoforms (NP_005098.2; NP_001138936.1).
Formulation:	Tris saline, pH~7.3 State: Aff - Purified State: Liquid purified Ig fraction Stabilizer: 0.5% BSA Preservative: 0.02% Sodium Azide
Concentration:	lot specific
Purification:	Ammonium Sulphate Precipitation followed by antigen Affinity Chromatography using the immunizing peptide
Conjugation:	Unconjugated
Storage:	Store undiluted at 2-8°C for one month or (in aliquots) at -20°C for longer. Avoid repeated freezing and thawing.
Stability:	Shelf life: one year from despatch.
Gene Name:	endo/exonuclease (5'-3'), endonuclease G-like
Database Link:	Entrez Gene 9941 Human Q9Y2C4
Synonyms:	ENDOGL1, ENDOGL2, ENGL, EXOG, Endonuclease G-like 1, Endo G-like 1



[View online »](#)

Product images:

(0.2 ug/ml) staining of HepG2 (A) and Jurkat (B) lysates (35ug protein in RIPA buffer). Primary incubation was 1 hour. Detected by chemiluminescence.