

## Product datasheet for **AP33487SU-N**

### Synaptopodin (SYNPO) (N-term) Guinea Pig Polyclonal Antibody

#### Product data:

Product Type:	Primary Antibodies
Applications:	IF, IHC, WB
Recommended Dilution:	<b>Immunoblotting (Western):</b> 1/500-1/1000. <b>Immunofluorescence.</b> <b>Immunohistochemistry on Frozen Sections:</b> 1/50-1/100. <b>Immunohistochemistry on Paraffin Sections:</b> 1/50-1/100 (after microwave treatment). <b>Incubation Time:</b> 1 h at RT for immunohistochemistry.
Reactivity:	Human, Mouse
Host:	Guinea Pig
Clonality:	Polyclonal
Immunogen:	Synthetic peptides (Mouse N-terminus), coupled to KLH
Specificity:	<p>The antibody reacts specifically with Synaptopodin, a prolin-rich actin-binding protein with 2 binding sites for actin. Synaptopodin belongs to actin-binding proteins, it has first been localized in podocytes and a subset of telencephalic postsynaptic densities. In human tissue synaptopodin has a molecular weight of 73.7 kD and pI of 9.38 (calculated from sequence data); in mouse the corresponding data are 74 kD, pI 9.27. In SDS-PAGE the antigen appears as 100 kD polypeptide in brain and 110 kD polypeptide in kidney (attributed to post-translational modifications). In Western blot analysis the antibody also reacts with a 44 kD degradation fragment of synaptopodin.</p> <p>The antibody recognizes differentiated podocytes (glomerular visceral epithelial cells) in vivo and in vitro (weaker additional reaction with arterial endothelial cells), co-localization with alpha-actinin.</p> <p>Reacts with a subset of exclusively telencephalic synapses. Differentiation-dependent expression during postnatal maturation of murine brain. Differentiation-dependent expression in cultured hippocampal neurons.</p>
Formulation:	State: Serum State: Liquid Stabilized Antiserum Preservative: 0.09% Sodium Azide Stabilizer: 0.5 % BSA
Conjugation:	Unconjugated



[View online »](#)

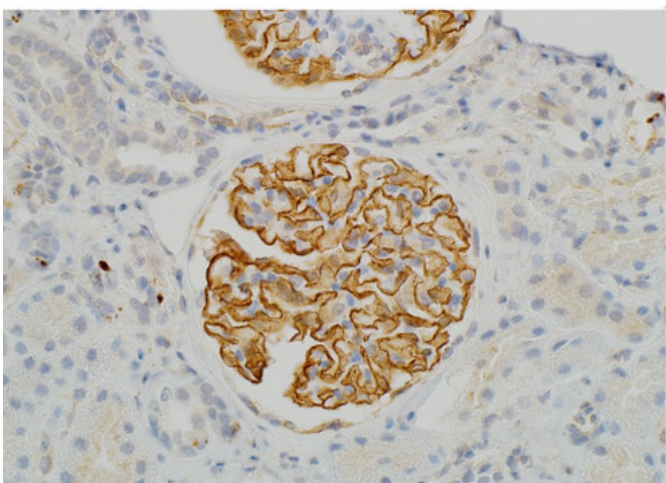
**Storage:** Store undiluted at 2-8°C for one month or (in aliquots) at -20°C for longer. Avoid repeated freezing and thawing. Shelf life: one year from despatch.

**Stability:** Shelf life: one year from despatch.

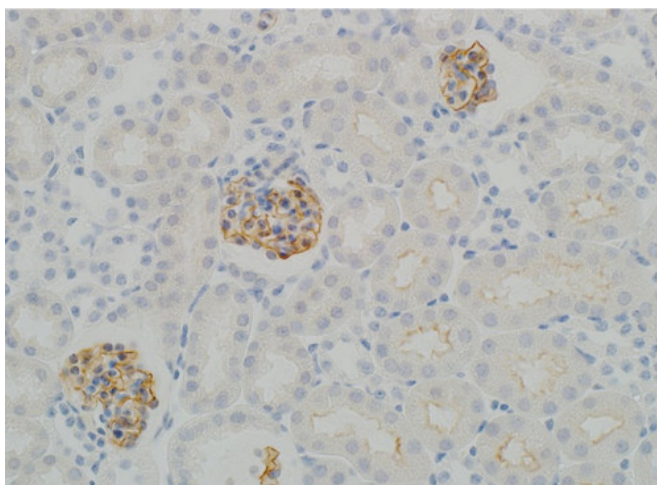
**Database Link:** [Entrez Gene 11346 Human](#)  
[Q8N3V7](#)

**Synonyms:** KIAA1029

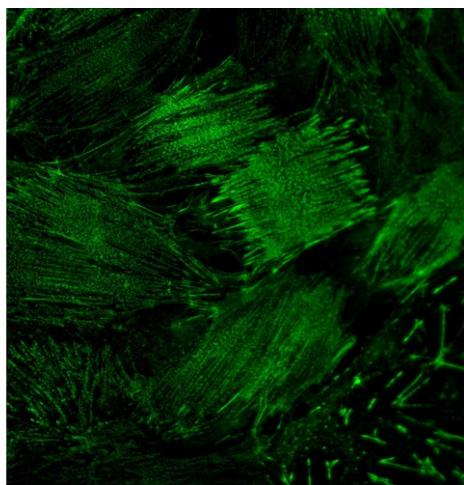
### Product images:



Synaptopodin staining in human glomeruli (AP33487PU-; dilution 1:50; Image courtesy of A.Weins, Brigham and Women's Hospital)



Synaptopodin staining in human glomeruli ([AP33487PU-N]; dilution 1:100; Image courtesy of A.Weins, Brigham and Women's Hospital).



Synaptopodin immunofluorescence staining in human podocytes. (Image courtesy of A.Weins, Brigham and Women's Hospital).