

## Product datasheet for **AP33461PU-N**

### RPL22 (C-term) Goat Polyclonal Antibody

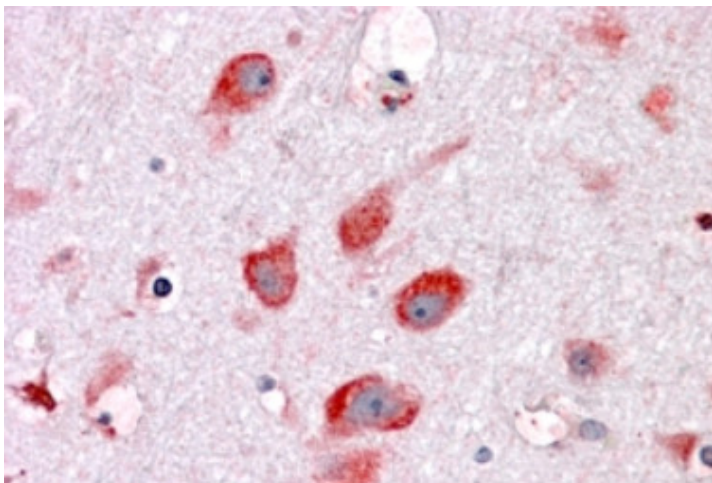
#### Product data:

Product Type:	Primary Antibodies
Applications:	ELISA, IHC
Recommended Dilution:	<b>ELISA:</b> 1/16000 (Detection Limit). <b>Western blot:</b> Preliminary experiments gave bands at approx 17-18kDa and 25kDa in Human Liver lysates after 0.5µg/ml antibody staining. Please note that currently we cannot find an explanation in the literature for the bands we observe given the calculated size of 14.8kDa according to NP_000974.1. Both detected bands were successfully blocked by incubation with the immunizing peptide (and BLAST results with the immunizing peptide sequence did not identify any other proteins to explain the additional bands). This batch is not expected to cross-react with Mouse and Rat in Western blot. <b>Immunohistochemistry on Paraffin Sections:</b> 3-6 µg/ml. In paraffin embedded Human Brain (Cortex) shows cytoplasm staining in neuronal bodies. 3.75 µg/ml. In paraffin embedded Human Thyroid, Uterus and Testis.
Reactivity:	Human, Mouse, Rat
Host:	Goat
Clonality:	Polyclonal
Immunogen:	Synthetic peptide (C-SKESYELRYFQINQ) from C-terminus of Human RPL22
Specificity:	This antibody recognizes the C-term of RPL22.
Formulation:	Tris saline buffer, pH~7.3 State: Aff - Purified State: Liquid purified IgG fraction Stabilizer: 0.5% BSA Preservative: 0.02% Sodium Azide
Concentration:	lot specific
Purification:	Immunoaffinity Chromatography
Conjugation:	Unconjugated
Storage:	Store undiluted at 2-8°C for one month or (in aliquots) at -20°C for longer. Avoid repeated freezing and thawing.



[View online »](#)

Stability:	Shelf life: one year from despatch.
Gene Name:	ribosomal protein L22
Database Link:	<a href="#">Entrez Gene 6146 Human P35268</a>
Synonyms:	EBER-associated protein, EAP, HBp15

**Product images:**

Paraffin Embedded Human Cortex stained with RPL22 Antibody. Steamed antigen retrieval with citrate buffer pH 6, AP-staining.