

## Product datasheet for **AP33460PU-N**

### Cd24 Rabbit Polyclonal Antibody

#### Product data:

|                         |   |
|-------------------------|---|
| Product Type:           | Primary Antibodies  |
| Applications:           | IHC, WB   |
| Recommended Dilution:   | <b>Western blotting:</b> 1/1000.<br><b>Immunohistochemistry on Paraffin Sections:</b> 1/200.  |
| Reactivity:             | Human, Mouse, Rat   |
| Host:                   | Rabbit  |
| Clonality:              | Polyclonal  |
| Immunogen:              | 27-53aa/76aa Mouse.   |
| Specificity:            | This antibody recognizes CD24.  |
| Formulation:            | 0.01M PBS, pH 7.4<br>State: Purified<br>State: Lyophilized purified Ig fraction<br>Stabilizer: 1% BSA<br>Preservative: 15mM Sodium Azide  |
| Reconstitution Method:  | Restore in sterile pH 7.4 0.01M PBS or diluent of antibody  |
| Conjugation:            | Unconjugated  |
| Storage:                | Store lyophilized at 2-8°C for 6 months or at -20°C long term.<br>After reconstitution store the antibody undiluted at 2-8°C for one month or (in aliquots) at -20°C long term.<br>Avoid repeated freezing and thawing. |
| Stability:              | Shelf life: one year from despatch.   |
| Predicted Protein Size: | 30-40 kDa   |
| Gene Name:              | CD24 molecule   |
| Database Link:          | <a href="#">Entrez Gene 25145 Rat Q07490</a>  |



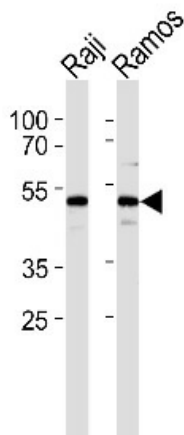
[View online »](#)

**Background:**

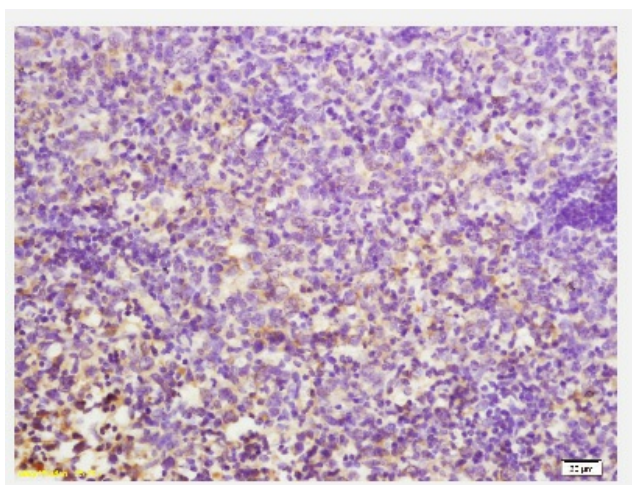
CD24 is a sialoglycoprotein that is expressed on mature granulocytes and in many B cells. This protein is anchored via a glycosyl phosphatidylinositol (GPI) link to the cell surface. Modulates B-cell activation responses. Signaling could be triggered by the binding of a lectin-like ligand to the CD24 carbohydrates, and transduced by the release of second messengers derived from the GPI-anchor. Promotes AG-dependent proliferation of B-cells, and prevents their terminal differentiation into antibody-forming cells.

**Synonyms:**

X62 heat stable antigen, HSA

**Product images:**


Western blot analysis of lysates from Raji, Ramos cell line (from left to right), using CD24 Antibody (Cat.-No AP33460PU-N). Antibody was diluted at 1/1000 at each lane. A goat anti-rabbit IgG H&L (HRP) at 1/5000 dilution was used as the secondary antibody. Lysates at 35ug per lane.



Immunohistochemical analysis of formalin fixed and paraffin embedded mouse lymphoma tissue using CD24 antibody Cat.-No AP33460PU-N. Antigen retrieval: citrate buffer (0.01M, pH 6.0), Boiling bathing for 15min; Block endogenous peroxidase by 3% Hydrogen peroxide for 30min; Blocking buffer (normal goat serum, C-0005) at 37°C for 20min; Incubation: Anti-CD24 Polyclonal Antibody, Unconjugated (Cat.-No AP33460PU-N) 1/200, overnight at 4°C, followed by conjugation to the secondary antibody and DAB staining.