

## Product datasheet for **AP33459PU-N**

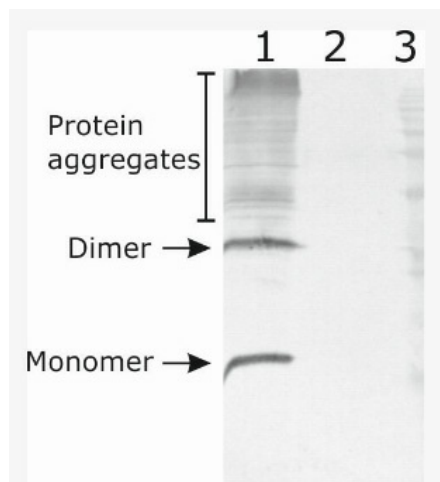
### Neurturin (NRTN) Rabbit Polyclonal Antibody

#### Product data:

Product Type:	Primary Antibodies
Applications:	ELISA, WB
Recommended Dilution:	<b>ELISA:</b> 1/50000-1/100000. <b>Western blot:</b> 1/500-1/1000.
Reactivity:	Human
Host:	Rabbit
Isotype:	IgG
Clonality:	Polyclonal
Immunogen:	Recombinant human NRTN protein produced using CHO-based. Protein was purified from the cell culture supernatant.
Specificity:	This antibody detects Human Neurturin. Other species not tested. Antibody doesn't give cross-reactivity to other GDNF-family proteins.
Formulation:	Concentrated Ammonium Sulphate in PBS pH 7.4 State: Aff - Purified State: Liquid purified IgG fraction
Concentration:	lot specific
Purification:	Affinity Chromatography
Conjugation:	Unconjugated
Storage:	Upon receipt, store at 2-8°C. As product is (NH <sub>4</sub> ) <sub>2</sub> SO <sub>4</sub> precipitate, mix well by pipetting or vortexing prior use.
Stability:	Shelf life: One year from despatch.
Gene Name:	neurturin
Database Link:	<a href="#">Entrez Gene 4902 Human Q99748</a>
Background:	Neurturin (NTN) is a member of the GDNF family of ligands. GDNF family proteins are distant members of the TGF-beta superfamily.
Synonyms:	NRTN



[View online »](#)

**Product images:**

Western-Blot detection of human NRTN expressed in CHO cells. Lane 1: hNRTN-containing CHOEBNALT85 cell culture supernatant. Lane 2: Negative control - CHOEBNALT85 cell culture supernatant. 5  $\mu$ l of supernatant were loaded per line. Primary antibody dilution 1:5000 was used. Rb pAb to Chk IgY was used as secondary antibody. Antibody recognizes protein dimeric, and monomeric variants.