

Product datasheet for **AP33458PU-N**

GFRA4 / GDNFR-alpha 4 Chicken Polyclonal Antibody

Product data:

Product Type:	Primary Antibodies
Applications:	ELISA, IF, WB
Recommended Dilution:	ELISA: 1/160000-1/320000. Western blot: 1/5000-1/10000. Immunofluorescence: 1/1000-1/3000.
Reactivity:	Human
Host:	Chicken
Isotype:	IgY
Clonality:	Polyclonal
Immunogen:	Recombinant His-tagged human GFRA-4 protein produced using CHO-based. For production of hGFRA-4, glycosylphosphatidyl-inositol GPI-anchor was removed and protein was secreted to the cell culture supernatant. Protein was purified by Ni-affinity chromatography following gel-filtration from cell culture supernatant.
Specificity:	This antibody detects Human GFRA-4 and doesn't cross-react with hGFRA-1, hGFRA-2, hGFRA-3. Other species not tested.
Formulation:	PBS pH 7.4 State: Aff - Purified State: Liquid purified IgY fraction Preservative: 0.09% Sodium Azide
Concentration:	lot specific
Purification:	Immunoaffinity Chromatography
Conjugation:	Unconjugated
Storage:	Store undiluted at 2-8°C for one month or (in aliquots) at -20°C to -80°C for longer. Avoid repeated freezing and thawing.
Stability:	Shelf life: one year from despatch.
Gene Name:	GDNF family receptor alpha 4



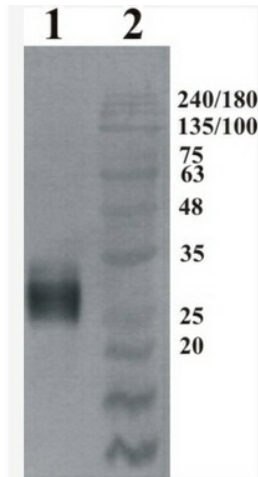
[View online »](#)

Database Link: [Entrez Gene 64096 Human Q9GZZ7](#)

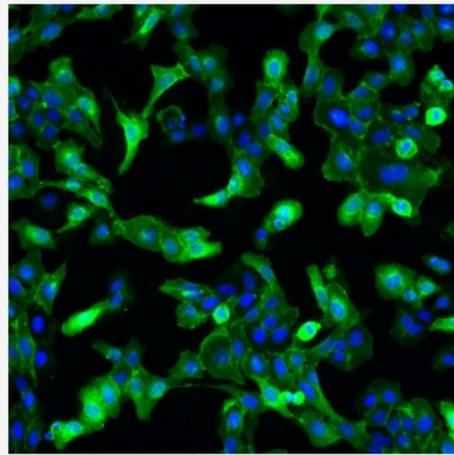
Background: Glial cell line-derived neurotrophic factor (GDNF) and neurturin (NTN) are two structurally related, potent neurotrophic factors that play key roles in the control of neuron survival and differentiation. The GFRa-1 is a member of the GDNF receptor family. It is a glycosylphosphatidylinositol (GPI)-linked cell surface receptor for both GDNF and NTN, and mediates activation of the RET tyrosine kinase receptor (www.ncbi.nlm.nih.gov/gene/2674).

Synonyms: GFR-alpha-4, Persephin receptor, GDNF receptor alpha-4

Product images:



Western-Blot detection of human GFR-4, using Chicken polyclonal antibody to human GFR-4. Protein was expressed by CHO cell culture. 100 ng of purified protein was loaded per lane. Lane 1. hGFR-4. Primary antibody dilution 1:5000 was used. Lane 2. Prestaine



IF detection of human GFR-4 expressed in U2OS cells. GFR-4 was visualized using Chicken polyclonal antibody to human GFR-4 (dilution 1:2000) and Goat anti-chicken IgY - H&L DyLight 550 (dilution 1:200) as secondary antibody. For nuclear staining DAPI w