

Product datasheet for **AP33456PU-N**

GDNF Receptor alpha 2 (GFRA2) Chicken Polyclonal Antibody

Product data:

Product Type:	Primary Antibodies
Applications:	ELISA, IF, WB
Recommended Dilution:	ELISA: 1/128000-1/160000. Western blot: 1/5000-1/10000. Immunofluorescence: 1/500-1/1000.
Reactivity:	Human
Host:	Chicken
Isotype:	IgY
Clonality:	Polyclonal
Immunogen:	Recombinant His-tagged human GFRA-2 protein produced using CHO-based. For production of hGFRA-2, glycosylphosphatidyl-inositol GPI-anchor was removed and protein was secreted to the cell culture supernatant. Protein was purified by Ni-affinity chromatography following gel-filtration from cell culture supernatant.
Specificity:	This antibody detects Human GFRA-2 and doesn't cross-react with hGFRA-1, hGFRA-3, hGFRA-4. Other species not tested.
Formulation:	Concentrated Ammonium Sulphate in PBS pH 7.4 State: Aff - Purified State: Liquid purified IgY fraction
Concentration:	lot specific
Purification:	Affinity Chromatography
Conjugation:	Unconjugated
Storage:	Upon receipt, store at 2-8°C. As product is (NH ₄) ₂ SO ₄ precipitate, mix well by pipetting or vortexing prior use.
Stability:	Shelf life: One year from despatch.
Gene Name:	GDNF family receptor alpha 2



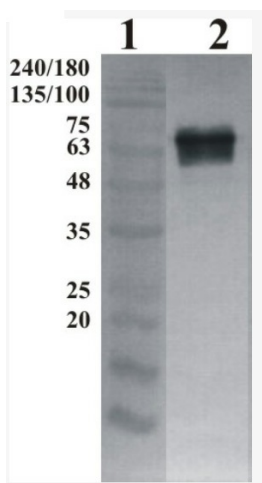
[View online »](#)

Database Link: [Entrez Gene 2675 Human O00451](#)

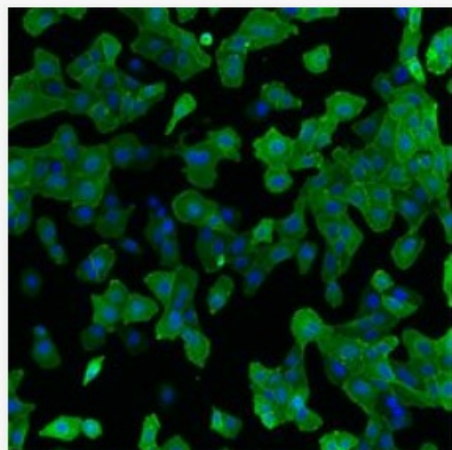
Background: Glial cell line-derived neurotrophic factor (GDNF) and neurturin (NTN) are two structurally related, potent neurotrophic factors that play key roles in the control of neuron survival and differentiation. The GFRA-1 is a member of the GDNF receptor family. It is a glycosylphosphatidylinositol (GPI)-linked cell surface receptor for both GDNF and NTN, and mediates activation of the RET tyrosine kinase receptor (www.ncbi.nlm.nih.gov/gene/2674).

Synonyms: GFR-alpha-2, Neurturin receptor alpha, GDNF receptor beta, RET ligand 2, GDNFRB, RETL2, TRNR2

Product images:



Western-Blot detection of human GFRA-2, using Chicken polyclonal antibody to human GFRA-2. GFRA-2 was C-terminally His tagged. Protein was expressed by CHO cell culture. 100 ng of purified protein was loaded per lane. Lane 1. Prestained protein ladder (Naxo 8003). Lane 2. hGFRA-2. Primary antibody dilution 1:5000 was used. Rabbit anti-chicken antibody was used as secondary antibody.



IF detection of human GFRA-2 expressed in U2OS cells. GFRA-2 was visualized using Chicken polyclonal antibody to human GFRA-2 (dilution 1:2000) and Goat anti-chicken IgY - H&L DyLight 550 (dilution 1:200) as secondary antibody. For nuclear staining DAPI was used. ArrayScan VTI platform (Thermo Scientific) was used for image acquisition (10x objective). Composite picture was generated using pseudocolors green for GFRA-2 specific signal and blue for nuclei.