

Product datasheet for **AP33455PU-N**

GDNF Receptor alpha 1 (GFRA1) Chicken Polyclonal Antibody

Product data:

| | |
|-----------------------|--|
| Product Type: | Primary Antibodies |
| Applications: | ELISA, IF, WB |
| Recommended Dilution: | ELISA: 1/80000-1/160000. Western blot: 1/5000-1/10000. Immunofluorescence: 1/1000-1/2000. |
| Reactivity: | Human |
| Host: | Chicken |
| Isotype: | IgY |
| Clonality: | Polyclonal |
| Immunogen: | Recombinant His-tagged human GFRA-1 protein produced using CHO-based. For production of hGFRA-1, glycosylphosphatidyl-inositol GPI-anchor was removed and protein was secreted to the cell culture supernatant. Protein was purified by Ni-affinity chromatography following gel-filtration from cell culture supernatant. |
| Specificity: | This antibody detects Human GFRA-1 and doesn't cross-react with hGFRA-2, hGFRA-3, hGFRA-4. Other species not tested. |
| Formulation: | Concentrated Ammonium Sulphate in PBS pH 7.4 State: Aff - Purified State: Liquid purified IgY fraction |
| Concentration: | lot specific |
| Purification: | Affinity Chromatography |
| Conjugation: | Unconjugated |
| Storage: | Upon receipt, store at 2-8°C. As product is $(\text{NH}_4)_2\text{SO}_4$ precipitate, mix well by pipetting or vortexing prior use. |
| Stability: | Shelf life: One year from despatch. |
| Gene Name: | GDNF family receptor alpha 1 |



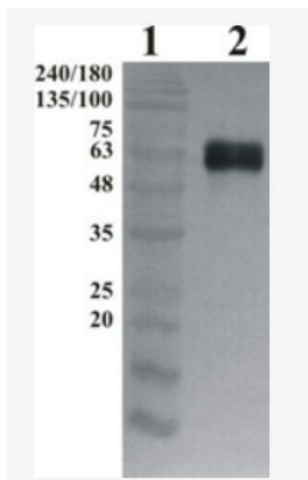
[View online »](#)

Database Link: [Entrez Gene 2674 Human P56159](#)

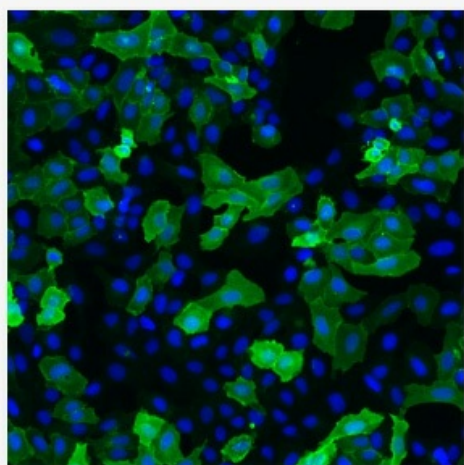
Background: Glial cell line-derived neurotrophic factor (GDNF) and neurturin (NTN) are two structurally related, potent neurotrophic factors that play key roles in the control of neuron survival and differentiation. The GFRA-1 is a member of the GDNF receptor family. It is a glycosylphosphatidylinositol (GPI)-linked cell surface receptor for both GDNF and NTN, and mediates activation of the RET tyrosine kinase receptor (www.ncbi.nlm.nih.gov/gene/2674).

Synonyms: GFR-alpha-1, GDNF receptor alpha, RET ligand 1, GDNFRA, RETL1, TRNR1

Product images:



Western-Blot detection of human GFRA-1, using Chicken polyclonal antibody to human GFRA-1. GFRA-1 was C-terminally His tagged. Protein was expressed by CHO cell culture. 100 ng of purified protein was loaded per lane. Lane 1. Prestained protein ladder (Naxo 8003). Lane 2. hGFRA-1. Primary antibody dilution 1:5000 was used. Rabbit anti-Chicken antibody was used as secondary antibody.



Immunofluorescence detection of human GFRA-1 expressed in U2OS cells. GFRA-1 was visualized using Chicken polyclonal antibody to human GFRA-1 (dilution 1:2000) and Goat anti-chicken IgY - H&L DyLight 550 (dilution 1:200) as secondary antibody. For nuclear staining DAPI was used. ArrayScan VTI platform (Thermo Scientific) was used for image acquisition (10x objective). Composite picture was generated using pseudocolors green for GFRA-1 specific signal and blue for nuclei.